



**RANCH LTD.
BULL SALE**

Your **Herd Bull Destination**



**HIGHWOOD AUCTION
HIGH RIVER, ALBERTA**

For-

**Red & Black Angus
Red & Black Performax
& Black Simmental**

MARCH
2014

• Tuesday
• 1:00 pm

25



- WELCOME TO THE U2 18TH ANNUAL BULL SALE -

Darren & Joanne Unger, Cole & Jordyn

Box 705, Coaldale, Alberta T1M 1M6

Phone / Fax: 403-345-2333 Email: u2ranch@xplornet.com

Website: www.u2ranch.ca

Welcome to our 18th Annual Sale. Our family would like to sincerely thank our loyal customers, friends, family, and neighbors for their continued support. We respect and value the commercial cattle men and women throughout the industry and look forward to maintaining your trust and building new long term relationships into the future.

This year has been extra special in regards to all of the positive feedback we have been receiving! Nothing inspires us more than a phone call letting us know how well the bulls have worked or how good the calves performed.

Our bull pen is as tight as it's ever been. Our calf crop was "heavy" on bull calves last year so this offering is sorted out of over 300 head. ***This enables us to fulfil our continuous goal of selling only Top End Bulls in Volume.***

The large sire groups that are on offer again this year allow you, the buyer, to put uniform groups of bulls together and gives us the tools to accurately evaluate how herd sires are really working and to pass these valuable genetics onto you.

The Calving Easy Aspect of our program is highly visible throughout the offering again this year. We try to specialize part of our program to raising these calving ease bulls with above average performance and built in Maternal Integrity.

Whether you are in need of a herd bull, a heifer bull or one that will do both, we take pride in ensuring that these bulls are bred with built in performance and strong maternal traits to positively influence the future of your cow herd. They were chosen from two large contemporary groups and all fed together responsibly here on the ranch. **NO BULLS WERE SHOWN OR PAMPERED AND NONE HAVE BEEN SOLD PRIOR TO THE SALE.**

Our Performax Plus hybrids and Simmentals are here again this year. We feel they are of excellent quality and offer the commercial cattlemen a valuable maternal crossbreeding option.

We have eight bulls in the offering from our good friends Brad and Aleta Chappell from Heart Of the Valley Farms. They are very progressive breeders and partners with us on the Copenhagen bull. These calves were raised on Vancouver island and brought to Alberta on September 5th, 2013. They were developed together with ours and the same guarantee and customer service, of course, applies.

Please note that we are customer driven and take the utmost pride in providing our customers with the ***"Best Guarantee in the Business!"*** In the unlikely event that there is a problem with your U2 bull, we are here to look after you! We specifically keep good quality spare bulls on hand so your cows or heifers will get bred, no questions asked.

We appreciate your interest in our program and take our responsibility of providing you with sound functional genetics very seriously.

Please feel free to give us a call or – better yet – stop by. We would love to show you the bulls and our cow herd. See ya' Sale Day.

Darren, Joanne, Cole and Jordy



The Unger Family
Darren, Joanne, Cole & Jordy



GUEST CONSIGNOR



Heart Of The Valley Farms
Brad, Aleta & Hayes Chappell
Lot #102 - #109

PLEASE NOTE!!

UPDATED INFO WILL BE AVAILABLE SALE DAY INCLUDING:

- ✓ CARCASS DATA
- ✓ SALE DAY WEIGHTS
- ✓ SC MEASUREMENTS

SIGHT UNSEEN PURCHASE GUARANTEE

IF YOU ARE UNABLE TO ATTEND THE SALE, WE HAVE A "SIGHT UNSEEN PURCHASE PLAN" THAT IS VERY POPULAR AND SATISFACTION GUARANTEED.

WE WILL GLADLY VISIT WITH YOU TO DISCUSS YOUR BULL REQUIREMENTS AND, TOGETHER, CHOOSE BULLS THAT MEET THOSE NEEDS. IF YOU ARE NOT SATISFIED UPON DELIVERY, YOU DON'T OWN THE BULL.

Sale Bull VIDEO CLIPS & catalogue online at: www.u2ranch.ca



18th Annual

U2 Ranch Ltd. Bull Sale

Tuesday • March 25, 2014 • 1:00 p.m.

RANCH LTD.

Highwood Livestock Auction • High River, Alberta

SALE DAY PHONE NUMBERS:

403-652-3343 (Auction) - OR - **403-795-2333** (Joanne Cell)
780-916-2628 (Rob Cell) - OR - **403-315-3651** (Darren Cell)

166 BULLS - RED & BLACK ANGUS & HYBRID SIMMI X ANGUS

- 109 RED ANGUS YEARLING BULLSLOT #1 - LOT #109 (Pages 3 - 56)
- 46 BLACK ANGUS YEARLING BULLS.....LOT #110 - LOT #155 (Pages 45 - 74)
- 11 "PERFORMAX" HYBRID & SIMMENTAL BULLS....LOT #156 - LOT #166 (Pages 75 - 79)

Special Feature - 150 Commercial Red Angus Replacement Heifers from Majestic Ranches

– Sale Staff –

Brent CareyAuctioneer.....(403) 650-9028
Mark StockRingman(306) 678-4811
Rod MacleodRingman(403) 540-7986

– Bull Financing Available –

If you are interested in financing, please call prior to the sale to discuss the options and terms.

– Insurance –

- CFI Insurance Group - Heather Barr - 403-337-0052
- U2 Bull Insurance Program - 403-345-2333

– Accommodations –

Heritage Inn Super 8 Motel
High River - (403) 652-3834 High River - (403) 652-4448

– Please Join Us –

We invite you to come early and join us for pre-sale viewing of the bulls and to stay afterwards for barbecue steak supper and refreshments.

– Viewing the Bulls –

The bulls are available for your inspection anytime until March 23rd at which time they will be moved to High River and will be available for viewing there right up to the sale.

– Sale Management –

Rob Holowaychuk

#207, 4808 Ross St. Red Deer, AB T4N 1X5

Ph: 403-341-5098 / Cell: 780-916-2628

Bob Toner

(306) 834-7385

Kirk Hurlburt

(306) 222-8210

– Sale Consultants –

Scott Bohrsen - 403-370-3010

Geoff Anderson - 306-731-7921



Jim Pulyk.(780) 853-5372 / (780)853-0626 cell
Cheramie Viator (Texas)979-777-9419
Christy Collins (Oklahoma)516-366-0734

– Online Bidding Available –

Mark Shologan - DLMS - 780-699-5082See Page 2

VOLUME DISCOUNT

Call for details prior to the sale!!

FREE DELIVERY

We offer Free Delivery at our convenience after Sale Day **We strongly advise insuring bulls that are left for delivery.**

**UPDATED INFO and CARCASS DATA
AVAILABLE ON SALE DAY**

Video Clips
of Sale Bulls at
u2ranch.ca

U2 Ranch Ltd.

Darren & Joanne Unger, Cole and Jordyn

Box 705, Coaldale, Alberta T1M 1M6

Ph/Fax: 403-345-2333 / Cell: 403-315-3651 or Cell: 403-795-2333

Email: u2ranch@xplornet.com Website: www.u2ranch.ca



U2 Red & Black Angus Bull Sale

– Explanation of EPD's –

- BW:** Birth Weight - expressed in pounds, is a prediction of a sire's ability to transmit birth weight to his progeny.
- WW:** Weaning Weight - expressed in pounds, is a predictor of a sire's ability to transmit weaning growth to his progeny.
- YW:** Yearling Weight - expressed in pounds, is a predictor of a sire's ability to transmit yearling growth to his progeny.
- Milk:** A predictor of a sire's genetic merit for milk and mothering ability as expressed in his daughters.
- TM:** Total Maternal - 1/2 Weaning Weight + Milk. This index is the expected amount of pounds that a sire's daughters' calves will differ from the breed average assuming the daughters are mated to sires of average genetic merit for Weaning Weight.

– Explanation of Performance Data –

- BW** Actual Birth Weight
- Adj. 205** Weaning Weight (*in lbs.*)
adjusted to 205 days and for
Age of Dam
- Adj. 365** Yearling weight (*in lbs.*)
adjusted to 365 days
- WPDA** Weight Per Day of Age (*in lbs.*)
- ADG** Average Daily Gain **ON TEST**
- S.C.** Scrotal Circumference (*in c.m.*)

Use EPD's only as a tool in evaluating an animal. They are only a computer's prediction and do not evaluate quality.

When you have a question about a bull's performance, especially maternal aspects, *ask* the breeder about the pedigree or, better yet, go see the breeder's herd for yourself.

At U2 Ranch, we are using the best genetics possible to produce good cattle, not just good EPD's!

– U-2 BULL WARRANTY PROGRAM –

To further improve our Customer Service, we are introducing our optional U-2 Bull Warranty Program. We are offering an "All Risk Bull Warranty" that basically provides full coverage if anything happens to your bull throughout the breeding season with a hassle free, easy to understand policy. If a problem arises with your bull, call us immediately and we will look after you. Call for more details.

And now, here's the most important thing to remember about this sale...

*Every Bull is Guaranteed 110%! We stand behind every bull we sell
and are not happy until you are!!*

HIGH SELLING BULL BUYER & VOLUME BUYER AWARDS

2013's Bull Sale High Selling Award went to:
Webers' Red Angus (South Dakota)

Volume Buyer Award went to:
Burke Creek Ranch (Claresholm, AB)

Please Note!


You will see  next to several lot #'s in the catalogue - it signifies a **"Straight Canadian"** pedigree

PHOTO CREDITS

2014 Livestock Pictures:

- Grant Rolston Photography - 403-593-2217

Cow Pictures

- Christy Collins

Candid Pictures from U2 2013 Bull Sale:

- Lee Gunderson - "Alberta Beef" Magazine

Can't make it to the sale?

Instructions for Viewing & Bidding

- 1 Visit www.dlms.ca
- 2 Fill out the registration form located under registration.
- 3 Click on downloads and follow the four step instructions located on the screen
- 4 Click test our computer. You will see the Test Video and Bid Control Box

To be approved as a bidder or any other questions, please email mshologan@dlms.ca or call Mark - 780.699.5082

Bid Live Online.

With DLMS you can Watch, Listen, & Bid on Your Computer just like you were there with Online Bidding, over the Internet!

DLMS
www.dlms.ca

Visit www.dlms.ca today!

Video Clips for Sale lot

available at: www.cattlevids.ca



CATTLEVIDS.CA

U2 Red Angus Yearling Bulls Sired by COPENHAGEN 3Y

A FEBRUARY 05 2011 REFERENCE SIRE (ET) RED MINBURN COPENHAGEN 3Y DWW 3Y #1645081

RED 5L NORSEMAN KING 2291 OSF MAF
RED RMJ REDMAN 1T OSF MAF (1415715)
CROWFOOT KURUBA 4033P

RED VGW KING OF THE WEST OSF MAF
RED NORSEMAN 1312 PJM
O C C HUNTER 928H
RED CROWFOOT KURUBA 2030M

CRESCENT CREEK MAIN EVENT 6H
MINBURN MAY 112M (1116004)
MINBURN MAY 90G

STEVENSON FORTUNE 425C AMF CAF NHF
CRESCENT CREEK ROSEBUD 115F
MINBURN LANCER 11B
EVERBLACK MAY 86S



Ref Sire A

2014 EPD's

BW: -1.3
WW: +51
YW: +91
Milk: +23
TM: +48

Performance

BW: 88
Adj 205: 798
Adj 365: 1319

After viewing
Copenhagen and
his amazing dam,

Minburn May 112M, in the fall of 2011, we decided we needed to make him a part of our future breeding plans. Together with Heart of the Valley and Silver Spur we paid a record price of \$67,000 to own this cutting edge outcross bull calf!

His first calf crop has truly amazed us. There are 27 sons in this sire group plus 5 from Heart of the Valley! His calves are moderate at birth and display a unique amount of volume and thickness early in life. They grow and perform at an accelerated rate and all carry themselves with character.



Lot #1

1 JANUARY 19 2013 MALE RED U-2 AUTHENTIC 139A DUA 139A #1739691

RED RMJ REDMAN 1T OSF MAF
RED MINBURN COPENHAGEN 3Y (1645081)
MINBURN MAY 112M

RED 5L NORSEMAN KING 2291 OSF MAF
CROWFOOT KURUBA 4033P
CRESCENT CREEK MAIN EVENT 6H
MINBURN MAY 90G

RED U-2 BIG LEAGUE 544R
RED U-2 STORMY 7202T (1388559)
RED U-2 STORMY 901J

RED LCC MAJOR LEAGUE A502M OSF MAF
RED U-2 ANEXA 09E
RED GLACIER LOGAN OSF MAF
RED U-2 STORMY 11G -

2014 EPD's

BW: -0.8
WW: +56
YW: +87
Milk: +18
TM: +46

Performance

BW: 88
Adj 205: 869
Adj 365: 1456
WPDA: 4.03
ADG: 3.67

"AUTHENTIC" is everything we look for in an ideal breeding bull. He's sound and correct with perfect balance. His character is proudly displayed in his faultless head carriage and fluid movement.

He's very quiet and out of an "Elite Cow" more than worthy of raising a herd bull of this caliber. We plan on making this bull a big part of our future!

WI 110 YI 121

Selling 1/2 Interest -
Possession Negotiable.

U2 Red Angus Yearling Bulls Sired by COPENHAGEN 3Y

Lot #2



Lakota 14N - Dam of Lot #2

2

JANUARY 11 2013

MALE

RED U-2 SKOAL 27A

DUA 27A #1739732

RED RMJ REDMAN 1T OSF MAF
RED MINBURN COPENHAGEN 3Y (1645081)
 MINBURN MAY 112M

RED 5L NORSEMAN KING 2291 OSF MAF
 CROWFOOT KURUBA 4033P
 CRESCENT CREEK MAIN EVENT 6H
 MINBURN MAY 90G

RED MLK CRK CUB 722 OSF MAF
RED FLYING K LAKOTA 14N (1157017)
 RED FLYING K MS DYNAMO 91H

RED GLACIER CUB 446 OSF MAF
 RED MLK CRK LAKOTA 152-HOBO OSF
 RED FLYING K DYNAMO 22F
 RED FLYING K VAQUERO 33F

"**SKOAL**" is a genetic showpiece with above average weaning, yearling and milk and well below average birth weight. Lakota 14N, his "Elite" dam, has a 108 ratio and is dam to our

2014 EPD's		Performance	
BW:	-2.8	BW:	78
WW:	+48	Adj 205:	809
YW:	+79	Adj 365:	1353
Milk:	+19	WPDA:	3.73
TM:	+43	ADG:	3.34

2012 high seller, Magnum Force, the \$28,000 1/2 interest bull to Weber's in South Dakota.

WI 103 YI 112
 Selling 1/2 Interest & Full Possession .

Lot #3



3

JANUARY 31 2013

MALE

RED U-2 COPENHAGEN 317A

DUA 317A #1739592

RED RMJ REDMAN 1T OSF MAF
RED MINBURN COPENHAGEN 3Y (1645081)
 MINBURN MAY 112M

RED 5L NORSEMAN KING 2291 OSF MAF
 CROWFOOT KURUBA 4033P
 CRESCENT CREEK MAIN EVENT 6H
 MINBURN MAY 90G

RED U-2 BIG LEAGUE 544R
RED FLYING K BEAUTY 92U (1448753)
 RED FLYING K BEAUTY 49N

RED LCC MAJOR LEAGUE A502M OSF MAF
 RED U-2 ANEXA 09E
 RED PATRIOT 629 OSF
 RED WEST POPLAR SPRUCE 10L

2014 EPD's		Performance	
BW:	-0.3	BW:	88
WW:	+53	Adj 205:	824
YW:	+84	Adj 365:	1450
Milk:	+17	WPDA:	4.04
TM:	+44	ADG:	4.09

A very complete kind of calf that stacks up very well both visually and on paper. Beauty 92U is a powerful maternally stacked Big League daughter that passes on her power. WI 103 YI 129

U2 Red Angus Yearling Bulls Sired by COPENHAGEN 3Y



Lot #4

4

JANUARY 17 2013

MALE

RED U-2 COPENHAGEN 108A

DUA 108A #1739674

RED RMJ REDMAN 1T OSF MAF
RED MINBURN COPENHAGEN 3Y (1645081)
MINBURN MAY 112M

RED 5L NORSEMAN KING 2291 OSF MAF
CROWFOOT KURUBA 4033P
CRESCENT CREEK MAIN EVENT 6H
MINBURN MAY 90G

RED LJC MISSION STATEMENT P27 OSF MAF
RED U-2 BOOT JACK 62X (1548445)
RED FLYING K MS. BOOT JACK 16N

RED LJC LANCER 806 OSF
RED LJC HANNAH 106 OSF
RED BJR C-CHIEF 811 OSF MAF
RED DEER RANGE CRISTY 378L

Here's a **HERDSIRE PROSPECT** with **SURE FIRE CALVING EASE GENETICS** in a very "fun to look at" package. When you get behind him he's just as impressive with

plenty of thickness and width to complement his abundant pattern and profile.

WI 100 YI 105

2014 EPD's		Performance	
BW:	-4.1	BW:	70
WW:	+45	Adj 205:	779
YW:	+77	Adj 365:	1291
Milk:	+21	WPDA:	3.46
TM:	+44	ADG:	3.20

5

FEBRUARY 05 2013

MALE

RED U-2 COPENHAGEN 364A

DUA 364A #1739556

RED RMJ REDMAN 1T OSF MAF
RED MINBURN COPENHAGEN 3Y (1645081)
MINBURN MAY 112M

RED 5L NORSEMAN KING 2291 OSF MAF
CROWFOOT KURUBA 4033P
CRESCENT CREEK MAIN EVENT 6H
MINBURN MAY 90G

RED U-2 BIG LEAGUE 544R
RED U2 MS. LOGAN 332W (1504223)
RED FLYING K MS LOGAN 40H

RED LCC MAJOR LEAGUE A502M OSF MAF
RED U-2 ANEXA 09E
RED GLACIER LOGAN OSF MAF
RED FLYING K SQUAW 24S



Lot #5

2014 EPD's	Performance
BW: -2.6	BW: 77
WW: +38	Adj 205: 708
YW: +57	Adj 365: 1109
Milk: +21	WPDA: 3.13
TM: +40	ADG: 2.68

364A is a **CALVING EASE SPECIALIST** that is correct and smooth from one end to the other. He also displays early maturity and an easy fleshing ability.

U2 Red Angus Yearling Bulls Sired by COPENHAGEN 3Y

Lot #6



Stormy 205M -
Dam of Lot #6

6

JANUARY 13 2013

MALE

RED U-2 MONUMENT 61A

DUA 61A #1739706

RED RMJ REDMAN 1T OSF MAF
RED MINBURN COPENHAGEN 3Y (1645081)
MINBURN MAY 112M

RED 5L NORSEMAN KING 2291 OSF MAF
CROWFOOT KURUBA 4033P
CRESCENT CREEK MAIN EVENT 6H
MINBURN MAY 90G

RED U-2 WANTED: 917J
RED U-2 STORMY 205M (1108265)
RED U-2 STORMY 936J

RED TKP BODACIOUS 693 OSF
RED THAT'LL DO ANEXA 48B
RED U-2 DUKE 6G
RED U-2 STORMY 38G

2014 EPD's

BW: +0.6

WW: +57

YW: +90

Milk: +15

TM: +43

Performance

BW: 97

Adj 205: 886

Adj 365: 1323

WPDA: 3.66

ADG: 2.73

MATERNAL BROTHER TO MISSION 61W! Monument is a gentle, blood red **HERD BULL** with a fault free pattern full of performance! Stormy 205M weaned him off grass at 978 lbs.

and has never missed with 1 heifer at Silver Spur and the rest retained. Her last bull calf was Mission 61W. **PROVEN GENETICS** to build a herd around! WI 111

Lot #7



7

JANUARY 16 2013

MALE

RED U-2 COPENHAGEN 89A

DUA 89A #1739719

RED RMJ REDMAN 1T OSF MAF
RED MINBURN COPENHAGEN 3Y (1645081)
MINBURN MAY 112M

RED 5L NORSEMAN KING 2291 OSF MAF
CROWFOOT KURUBA 4033P
CRESCENT CREEK MAIN EVENT 6H
MINBURN MAY 90G

RED U-2 BIG LEAGUE 544R
RED U-2 ROBERTA 8056U (1448868)
RED U-2 ROBERTA 1485P

RED LCC MAJOR LEAGUE A502M OSF MAF
RED U-2 ANEXA 09E
RED HOWE MR MATRIX 7L AMF NHF OSF MAF
RED U-2 ROBERTA 138L

2014 EPD's

BW: -2.2

WW: +48

YW: +75

Milk: +21

TM: +45

Performance

BW: 80

Adj 205: 776

Adj 365: 1305

WPDA: 3.59

ADG: 3.31

89A is a moderate framed, deep sided calf that weaned off his mother at 875 lbs and gained awesome on test with a YI of 106! **RECOMMENDED FOR HEIFERS OR COWS.** YI 109

U2 Red Angus Yearling Bulls Sired by COPENHAGEN 3Y



Lot #8

351N - Dam to Lot #8

8

JANUARY 28 2013

MALE

RED U-2 BAND WIDTH 261A

DUA 261A #1739633

RED RMJ REDMAN 1T OSF MAF
RED MINBURN COPENHAGEN 3Y (1645081)
MINBURN MAY 112M

RED 5L NORSEMAN KING 2291 OSF MAF
CROWFOOT KURUBA 4033P
CRESCENT CREEK MAIN EVENT 6H
MINBURN MAY 90G

RED BAR-E-L APPROVAL 4L
RED U-2 ANEXA 351N (1159167)
RED U-2 ANEXA 09E

RED TER-RON CARLTON 810H
RED BAR-E-L CLASS 10J
RED THAT'LL DO AMERIGO 73C
RED THAT'LL DO ANEXA 48B

It is hard to find a bull that offers this degree of muscle, width and performance without sacrificing the style, eye appeal and correctness found in Band Width. Anexa 351N has "Elite"

status with a 107 ratio on nine calves with herd bulls to Diedrich, Heart of the Valley and Majestic. **HERD BULL** backed by 3 generations of our very best cows! WI 118 Selling 1/2 interest, full possession

2014 EPD's

BW: +1.6

WW: +66

YW: +106

Milk: +19

TM: +52

Performance

BW: 86

Adj 205: 927

Adj 365: 1243

WPDA: 3.69

ADG: 2.15

9

JANUARY 15 2013

MALE

RED U-2 COPENHAGEN 83A

DUA 83A #1764561

RED RMJ REDMAN 1T OSF MAF
RED MINBURN COPENHAGEN 3Y (1645081)
MINBURN MAY 112M

RED 5L NORSEMAN KING 2291 OSF MAF
CROWFOOT KURUBA 4033P
CRESCENT CREEK MAIN EVENT 6H
MINBURN MAY 90G

RED BDL UPROAR 124J
RED U-2 LEAH 179X (1553592)
RED U-2 LEAH 508R

RED GOLD-BAR STONE COLD 115S
RED TOWAW DOLL 100K
RED LCC MAJOR LEAGUE A502M OSF MAF
RED U-2 ZAMA LEAH 962J

2014 EPD's

BW: -2.0

WW: +57

YW: +95

Milk: +19

TM: +47

Performance

BW: 70

Adj 205: 806

Adj 365: 1213

WPDA: 3.31

ADG: 2.55



Lot #9

83A is a very complete moderate framed **HEIFER BULL PROSPECT** with the kind of hip and muscle shape we like to see in an Angus beef bull.

WI 103

U2 Red Angus Yearling Bulls Sired by COPENHAGEN 3Y

Lot #10



10

JANUARY 09 2013

MALE

RED U-2 COPENHAGEN 17A

DUA 17A #1739727

RED RMJ REDMAN 1T OSF MAF
RED MINBURN COPENHAGEN 3Y (1645081)
MINBURN MAY 112M

RED 5L NORSEMAN KING 2291 OSF MAF
CROWFOOT KURUBA 4033P
CRESCENT CREEK MAIN EVENT 6H
MINBURN MAY 90G

RED FLYING K AMBUSH 51T
RED U-2 STORMY 454Y (1629249)
RED U-2 STORMY 8186U

RED SVR AMBUSH 59P
RED FLYING K MS DYNAMO 122P
RED U-2 BIG LEAGUE 544R
RED U-2 STORMY 936J

Visually impressive, 17A's clean make-up thru his head, neck and shoulder, together with his overall thickness and cool style, make him definite **HERD BULL MATERIAL**.

2014 EPD's		Performance	
BW:	-1.1	BW:	75
WW:	+46	Adj 205:	762
YW:	+67	Adj 365:	1439
Milk:	+19	WPDA:	3.61
TM:	+41	ADG:	4.23

His dam, Stormy 454Y, is a sweetheart of a heifer that definitely adds value to these genetics! **1439 LB YW OUT OF A FIRST CALF HEIFER!**
YI 128

Lot #11



11

JANUARY 24 2013

MALE

RED U-2 COPENHAGEN 201A

DUA 201A #1739661

RED RMJ REDMAN 1T OSF MAF
RED MINBURN COPENHAGEN 3Y (1645081)
MINBURN MAY 112M

RED 5L NORSEMAN KING 2291 OSF MAF
CROWFOOT KURUBA 4033P
CRESCENT CREEK MAIN EVENT 6H
MINBURN MAY 90G

RED ANGUS ACRES JURASSIC 105E
RED U-2 LARKABA 028K (1021233)
RED TOP LARKABA 11T

RED TOWAW CRIMSON TIDE 67A
RED FRNDLY MEDOS PRINCESS 50Y
RED BRA FIRST-CLASS 13R
RED LEACHMAN LARKABA 2014

Long sided, full bodied and built to travel.

He's out of Larkaba 028K, the last treasured daughter of our original donor cow, Larkaba 11T. Her age and condition probably held this calf back but he showed his true genetic potential on test where he indexed 131. Maternal grandam, 11T, produced 40 calves in her lifetime including one of the greatest female making bulls in the breed, Diadem 7D. **MATERNAL GENETICS!!** YI 131

2014 EPD's		Performance	
BW:	+0.1	BW:	86
WW:	+32	Adj 205:	681
YW:	+53	Adj 365:	1315
Milk:	+18	WPDA:	3.44
TM:	+35	ADG:	4.14

U2 Red Angus Yearling Bulls Sired by COPENHAGEN 3Y



Lot #12

12

JANUARY 15 2013

MALE

RED U-2 COPENHAGEN 86A

DUA 86A #1739716

RED RMJ REDMAN 1T OSF MAF
RED MINBURN COPENHAGEN 3Y (1645081)
MINBURN MAY 112M

RED 5L NORSEMAN KING 2291 OSF MAF
CROWFOOT KURUBA 4033P
CRESCENT CREEK MAIN EVENT 6H
MINBURN MAY 90G

RED U-2 FLUTIE 941J
RED U-2 REBELLO 195L (1055339)
RED SSS REBELLO 852G

RED BRYLOR FLUTIE 24F
RED U-2 ANEXA 09E
RED SSS HIGH MARK 272D
RED SSS REBELLO 532Y

Very cool 3Y calf that has the "look" many people are trying to find! He's just as impressive from the rear with more than ample width and thickness to compliment his shapely profile.

Rebello 195L is a good ole "Straight Canadian" cow that has thrown an average BW of 76 lbs on her last 5 bull calves (none over 79 lbs) to Brewins, Finstead Ranching and Macmillian (2). Predictable Calving Ease with **HERD BULL QUALITY!** WI 101

2014 EPD's	
BW:	-2.2
WW:	+44
YW:	+68
Milk:	+14
TM:	+36

Performance	
BW:	79
Adj 205:	792
Adj 365:	1192
WPDA:	3.29
ADG:	2.50



Lot #13

13

JANUARY 23 2013

MALE

RED U-2 COPENHAGEN 184A

DUA 184A #1739652

RED RMJ REDMAN 1T OSF MAF
RED MINBURN COPENHAGEN 3Y (1645081)
MINBURN MAY 112M

RED 5L NORSEMAN KING 2291 OSF MAF
CROWFOOT KURUBA 4033P
CRESCENT CREEK MAIN EVENT 6H
MINBURN MAY 90G

RED LJC MISSION STATEMENT P27 OSF MAF
RED U2 SHIVER 13W (1505256)
RED NORTHLINE SHIVER 305P

RED LJC LANCER 806 OSF
RED LJC HANNAH 106 OSF
RED PIE ATLANTIC 2204 OSF MAF
RED NORTHLINE RUBY 305M

ADDED PERFORMANCE with tremendous depth and muscle thickness throughout with an EPD profile to match. His maternal grandam, "Shiver 305P", is a donor now owned with Christy Collins.

His dam, 13W, has raised us top replacement heifers and a herd bull to Downie Lake Colony. Very reliable genetics!

WI 100 YI 116

2014 EPD's	
BW:	+0.1
WW:	+60
YW:	+107
Milk:	+21
TM:	+52

Performance	
BW:	86
Adj 205:	799
Adj 365:	1361
WPDA:	3.74
ADG:	3.68

U2 Red Angus Yearling Bulls Sired by COPENHAGEN 3Y

Lot #14



14

JANUARY 20 2013

MALE

RED U-2 COPENHAGEN 153A

DUA 153A #1739700

RED RMJ REDMAN 1T OSF MAF
RED MINBURN COPENHAGEN 3Y (1645081)
 MINBURN MAY 112M

RED 5L NORSEMAN KING 2291 OSF MAF
 CROWFOOT KURUBA 4033P
 CRESCENT CREEK MAIN EVENT 6H
 MINBURN MAY 90G

RED U-2 BIG LEAGUE 544R
RED U-2 ANEXA 8026U (1448841)
 U-2 ANEXA 4042P

RED LCC MAJOR LEAGUE A502M OSF MAF
 RED U-2 ANEXA 09E
 CRESCENT CREEK QUANTUM 79M
 RED U-2 ANEXA 171L

A **DEFINITE SALE FEATURE**, We very nearly lost his mother this summer but he more than made up for it on test being our #1 gaining bull with a 163 YI! His dam, 8026U, is a

2014 EPD's		Performance	
BW:	-2.7	BW:	79
WW:	+36	Adj 205:	633
YW:	+61	Adj 365:	1446
Milk:	+20	WPDA:	3.75
TM:	+38	ADG:	5.09

beautiful moderate Big League daughter and grandam, Anexa 4042P, is an awesome black red carrier with an excellent production record as well.
 YI 168

Lot #15



15

JANUARY 25 2013

MALE

RED U-2 COPENHAGEN 220A

DUA 220A #1739604

RED RMJ REDMAN 1T OSF MAF
RED MINBURN COPENHAGEN 3Y (1645081)
 MINBURN MAY 112M

RED 5L NORSEMAN KING 2291 OSF MAF
 CROWFOOT KURUBA 4033P
 CRESCENT CREEK MAIN EVENT 6H
 MINBURN MAY 90G

RED MLK CRK CUB 722 OSF MAF
RED FLYING K LAKOTA 48N (1162037)
 RED FLYING K LOLA 77L OSF

RED GLACIER CUB 446 OSF MAF
 RED MLK CRK LAKOTA 152-HOBO OSF
 RED BUF CRK CHF 824-1658 OSC MAF
 RED FLYING K MISS SUIJI 62W

220A is an impressive, long, smooth, well balanced calf with built in maternal excellence. Lakota 48N is a beautiful "Elite" dam with an index of 105 on 9 calves. Last year's Herd Bull sold to Keith Ypma. YI 119

2014 EPD's		Performance	
BW:	-0.6	BW:	83
WW:	+51	Adj 205:	767
YW:	+87	Adj 365:	1345
Milk:	+20	WPDA:	3.75
TM:	+46	ADG:	3.78

U2 Red Angus Yearling Bulls Sired by COPENHAGEN 3Y



16

JANUARY 21 2013

MALE

RED U-2 ROCK SOLID 165A

DUA 165A #1739643

RED RMJ REDMAN 1T OSF MAF
RED MINBURN COPENHAGEN 3Y (1645081)
MINBURN MAY 112M

RED 5L NORSEMAN KING 2291 OSF MAF
CROWFOOT KURUBA 4033P
CRESCENT CREEK MAIN EVENT 6H
MINBURN MAY 90G

RED BIEBER D5IGN 1325-082
RED U-2/TR DIAMOND MIST 1412P (1237766)
DMM DIAMOND MIST 8F

SCHULER DYN 027-082
RED RAB INDIGO 1073-982
RED FLYING K PATRIOT 11C
DMM DIAMOND 9D

Thick, muscular. dark red and massive, and an **OUTCROSS ON BOTH SIDES OF HIS PEDIGREE** makes 165A unique to most red outfits. His dam, 1412P, is a direct daughter of Mist 8F

("Elite" with avg ratio of 107 on 8 calves). Her bull calves have an avg 77 lb BW and have sold to Hricise, Graham and Majestic. WI 109

Selling 1/2 Interest; Possession Negotiable

2014 EPD's		Performance	
BW:	-1.3	BW:	82
WW:	+53	Adj 205:	859
YW:	+85	Adj 365:	1350
Milk:	+22	WPDA:	3.85
TM:	+49	ADG:	3.24

17

FEBRUARY 20 2013

MALE

RED U-2 COPENHAGEN 461A

DUA 461A #1739466

RED RMJ REDMAN 1T OSF MAF
RED MINBURN COPENHAGEN 3Y (1645081)
MINBURN MAY 112M

RED 5L NORSEMAN KING 2291 OSF MAF
CROWFOOT KURUBA 4033P
CRESCENT CREEK MAIN EVENT 6H
MINBURN MAY 90G

RED U2 MISSION 61W
RED U-2 MISTY 20Y (1629259)
RED U-2 MISTY 546R

RED LJC MISSION STATEMENT P27 OSF MAF
RED U-2 STORMY 205M
RED U-2 MVP 386N
RED U-2 MISTY 382N



2014 EPD's	Performance
BW: -3.9	BW: 69
WW: +44	Adj 205: 747
YW: +86	Adj 365: 1391
Milk: +17	WPDA: 3.63
TM: +39	ADG: 4.20

ULTRA LOW BIRTH WEIGHT CALVING EASE BULL with very respectable performance and depth. His dam, Misty 20Y, is a first calf heifer off to a very good start!
YI 122

U2 Red Angus Yearling Bulls Sired by COPENHAGEN 3Y

Lot #18



18

JANUARY 17 2013

MALE

RED U-2 COPENHAGEN 105A

DUA 105A #1739672

RED RMJ REDMAN 1T OSF MAF
RED MINBURN COPENHAGEN 3Y (1645081)
MINBURN MAY 112M

RED 5L NORSEMAN KING 2291 OSF MAF
CROWFOOT KURUBA 4033P
CRESCENT CREEK MAIN EVENT 6H
MINBURN MAY 90G

RED STEWART PATHFINDER 5L
RED U-2 BELA 8153U (1448949)
RED U-2 BELA 1338N

RED FCC RAMBO 502 OSF
RED JEWEL MISS PATHY 62A
RED HOWE MR MATRIX 7L AMF NHF OSF MAF
RED U-2 BELA 194L

A moderate 3Y son that also bloomed very early in his life. His extra stout hip and muscle shape were evident shortly after he hit the ground. Bela 8153U has been an excellent producing

Pathfinder daughter with sons chosen by X-X and last year's \$10,000 61W son to Weber's in South Dakota. Extra hip, extra hair, extra quiet! WI 103

2014 EPD's		Performance	
BW:	-0.9	BW:	86
WW:	+46	Adj 205:	818
YW:	+77	Adj 365:	1221
Milk:	+20	WPDA:	3.43
TM:	+43	ADG:	2.44

Lot #19



19

JANUARY 25 2013

MALE

RED U-2 COPEN HAGEN 229A

DUA 229A #1739610

RED RMJ REDMAN 1T OSF MAF
RED MINBURN COPENHAGEN 3Y (1645081)
MINBURN MAY 112M

RED 5L NORSEMAN KING 2291 OSF MAF
CROWFOOT KURUBA 4033P
CRESCENT CREEK MAIN EVENT 6H
MINBURN MAY 90G

RED FLYING K ACE 9R
RED FLYING K MS EXECUTIVE 18T (1483137)
RED FLYING K MS EXECUTIVE 89H

RED FLYING K PATRICK 29N
RED FLYING K MS DYNAMO 91H
RED BRYLOR CHAIRMAN 49E
RED FLYING K MS CHIEF 72D

229A is an especially long sided bull with plenty of performance. His dam's track record suggests that this bull could be **USED ON HEIFERS OR COWS**. She has raised bulls selected by Steve Schlaht and West Raley. WI 103

2014 EPD's		Performance	
BW:	-0.8	BW:	80
WW:	+44	Adj 205:	813
YW:	+71	Adj 365:	1196
Milk:	+20	WPDA:	3.48
TM:	+42	ADG:	2.56

U2 Red Angus Yearling Bulls Sired by COPENHAGEN 3Y



Lot #20

20

JANUARY 17 2013

MALE

RED U-2 COPENHAGEN 114A

DUA 114A #1739677

RED RMJ REDMAN 1T OSF MAF
RED MINBURN COPENHAGEN 3Y (1645081)
MINBURN MAY 112M

RED 5L NORSEMAN KING 2291 OSF MAF
CROWFOOT KURUBA 4033P
CRESCENT CREEK MAIN EVENT 6H
MINBURN MAY 90G

RED U-2 INXS 1665S
RED U-2 MS BLAZE 125X (1548191)
RED FLYING K MS BLAZE 19E

RED U-2 ILLICIT 423P OSF MAF
RED U-2 ANEXA 36G
RED LINE BLAZE 99R
RED FLYING K MISS SUIJI 43U

A visitor favorite, we like the style and muscle expression this bull displays and believe he will advance the visual quality and stoutness of his progeny. His dam, a straight Canadian

Inxs daughter, is a sister to the dam of last year's sale feature "Justified" to Bar-E-L. **RELIABLE CUTTING EDGE GENETICS!**

WI 102 YI 115

2014 EPD's		Performance	
BW:	-3.6	BW:	75
WW:	+34	Adj 205:	795
YW:	+58	Adj 365:	1351
Milk:	+20	WPDA:	3.60
TM:	+37	ADG:	3.48



Lot #21

21

JANUARY 24 2013

MALE

RED U-2 COPENHAGEN 200A

DUA 200A #1739660

RED RMJ REDMAN 1T OSF MAF
RED MINBURN COPENHAGEN 3Y (1645081)
MINBURN MAY 112M

RED 5L NORSEMAN KING 2291 OSF MAF
CROWFOOT KURUBA 4033P
CRESCENT CREEK MAIN EVENT 6H
MINBURN MAY 90G

RED HOWE MR MATRIX 7L AMF NHF OSF MAF
RED U-2 REBELLO 318N (1152696)
RED SSS REBELLO 852G

RED HOWE MR MAT DDH 19F
RED CRANSTON TINKERBELL 1J
RED SSS HIGH MARK 272D
RED SSS REBELLO 532Y

A **CALVING EASE BULL** that is made nice thru his head, neck and shoulder. We are impressed how 3Y has been able to consistently produce these eye appealing bulls

with user friendly birth weights. 318N adds to this bull's reliability with a solid production record and structure that has stood the test of time.

YI 104

2014 EPD's		Performance	
BW:	-3.2	BW:	73
WW:	+37	Adj 205:	696
YW:	+58	Adj 365:	1198
Milk:	+14	WPDA:	3.36
TM:	+32	ADG:	3.31

U2 Red Angus Yearling Bulls Sired by COPENHAGEN 3Y

Lot #22



22

JANUARY 26 2013

MALE

RED U-2 COPENHAGEN 236A

DUA 236A #1739615

RED RMJ REDMAN 1T OSF MAF
RED MINBURN COPENHAGEN 3Y (1645081)
MINBURN MAY 112M

RED 5L NORSEMAN KING 2291 OSF MAF
CROWFOOT KURUBA 4033P
CRESCENT CREEK MAIN EVENT 6H
MINBURN MAY 90G

RED U-2 WANTED: 917J
RED U-2 1591R (1273722)
RED U-2 MISS 169L

RED TKP BODACIOUS 693 OSF
RED THAT'LL DO ANEXA 48B
RED MEM SAWYER BROWN 72J
RED BLADES MISS BODACIOUS 50J

Definitely one of the **PERFORMANCE LEADERS** in the offering, this guy is super long and powerful yet smooth made and sound. His calves will wean heavy!

2014 EPD's

BW: +1.1

WW: +46

YW: +76

Milk: +17

TM: +40

Performance

BW: 101

Adj 205: 924

Adj 365: 1358

WPDA: 3.93

ADG: 2.89

His dam, 1591R, has contributed well raising bulls for Keith Rhodes, MS Maclean, Glen Tharle and Larry Machacek.

WI 116

Lot #23



23

FEBRUARY 20 2013

MALE

RED U-2 COPENHAGEN 460A

DUA 460A #1739465

RED RMJ REDMAN 1T OSF MAF
RED MINBURN COPENHAGEN 3Y (1645081)
MINBURN MAY 112M

RED 5L NORSEMAN KING 2291 OSF MAF
CROWFOOT KURUBA 4033P
CRESCENT CREEK MAIN EVENT 6H
MINBURN MAY 90G

RED FLYING K AMBUSH 51T
RED U-2 EMILY 444Y (1629500)
RED U-2 EMILY 229M

RED SVR AMBUSH 59P
RED FLYING K MS DYNAMO 122P
RED BADLANDS BONUS 702
RED U-2 EMILY 933J

A heifer's first calf with uncommon performance and shapely hind quarter. We believe this bull could be **USED ON HEIFERS AND THE COWHERD.**

2014 EPD's

BW: -0.5

WW: +51

YW: +78

Milk: +21

TM: +47

Performance

BW: 84

Adj 205: 876

Adj 365: 1398

WPDA: 3.75

ADG: 3.44

WI 117

U2 Red Angus Yearling Bulls Sired by COPENHAGEN 3Y



Lot #24

24

JANUARY 26 2013

MALE

RED U-2 SUB ZERO 234A

DUA 234A #1739613

RED RMJ REDMAN 1T OSF MAF
RED MINBURN COPENHAGEN 3Y (1645081)
MINBURN MAY 112M

RED 5L NORSEMAN KING 2291 OSF MAF
CROWFOOT KURUBA 4033P
CRESCENT CREEK MAIN EVENT 6H
MINBURN MAY 90G

RED U-2 ICON 223M
RED U-2 ROBERTA 418P (1209180)
RED U-2 ROBERTA LEE 10H

RED BLAZE V415 OSF
RED U-2 ANEXA 5F
RED L4 DESIGN 194Z OSF
RED TOWAW ROBERTA LEE 75T

HERDSIRE PROSPECT!

234A offers substance and dimension with very impressive weaning (112) and yearling (110) figures, a modest 75 lb. birth weight and a "Sub Zero"

2014 EPD's	
BW:	-3.8
WW:	+46
YW:	+78
Milk:	+24
TM:	+47

Performance	
BW:	75
Adj 205:	857
Adj 365:	1407
WPDA:	3.41
ADG:	3.61

birth epd. 418P raised a herd bull for Martin's Ranch and multiple for Majestic averaging only 72 lbs BW on 5 bull calves! Wow!

Selling 1/2 Interest Possession Negotiable

25

JANUARY 26 2013

MALE

RED U-2 COPENHAGEN 237A

DUA 237A #1739616

RED RMJ REDMAN 1T OSF MAF
RED MINBURN COPENHAGEN 3Y (1645081)
MINBURN MAY 112M

RED 5L NORSEMAN KING 2291 OSF MAF
CROWFOOT KURUBA 4033P
CRESCENT CREEK MAIN EVENT 6H
MINBURN MAY 90G

RED PATRIOT 629 OSF
RED FLYING K BEAUTY 6N (1162046)
RED FLYING K BERRY 141K

RED FLYING K PAT 43C OSF
RED BEAUTY
RED FLYING K BARNEY 25H
RED FLYING K MS LOGAN 30H

Copenhagen 3Y



Sire of
Lot's #1 - #27,
#102, #103,
#105, #106,
#109

2014 EPD's	Performance
BW: +0.3	BW: 97
WW: +57	Adj 205: 834
YW: +97	Adj 365: 1438
Milk: +21	WPDA: 4.02
TM: +50	ADG: 3.95

You've got to like this **POWER BULL's** extension & length. He weaned off at 902 lbs. and performed even better on test!
WI 103 YI 125
REA +.16 Marb +.26

U2 Red Angus Yearling Bulls Sired by COPENHAGEN 3Y



26

JANUARY 14 2013

MALE

RED U-2 COPENHAGEN 67A

DUA 67A #1739710

RED RMJ REDMAN 1T OSF MAF
RED MINBURN COPENHAGEN 3Y (1645081)
MINBURN MAY 112M

RED 5L NORSEMAN KING 2291 OSF MAF
CROWFOOT KURUBA 4033P
CRESCENT CREEK MAIN EVENT 6H
MINBURN MAY 90G

RED HOWE MR MATRIX 7L AMF NHF OSF MAF
RED U-2 CHEROKEE 514R (1273567)
RED U-2 CHEROKEE 942J

RED HOWE MR MAT DDH 19F
RED CRANSTON TINKERBELL 1J
RED U-2 DUKE 6G
RED TOP MISS CHEROKEE 54G

PERFORMANCE ORIENTED with style, depth and muscle shape. Expect calves that far out perform the norm both at weaning and on feed. 514R is a power cow that has raised

2014 EPD's	
BW:	-0.5
WW:	+43
YW:	+68
Milk:	+19
TM:	+40

Performance	
BW:	92
Adj 205:	790
Adj 365:	1469
WPDA:	3.94
ADG:	4.25

power bulls for Crescent Hill Farms and Prairie Rose Farms that have huge performance data as well. Performance to take to the bank!

YI 140



27

FEBRUARY 07 2013

MALE

RED U-2 COPENHAGEN 379A

DUA 379A #1739514

RED RMJ REDMAN 1T OSF MAF
RED MINBURN COPENHAGEN 3Y (1645081)
MINBURN MAY 112M

RED 5L NORSEMAN KING 2291 OSF MAF
CROWFOOT KURUBA 4033P
CRESCENT CREEK MAIN EVENT 6H
MINBURN MAY 90G

RED MLK CRK CUB 722 OSF MAF
RED FLYING K LAKOTA 67N (1163506)
RED FLYING K LOLA 33J

RED GLACIER CUB 446 OSF MAF
RED MLK CRK LAKOTA 152-HOBO OSF
RED BUF CRK CHF 824-1658 OSC MAF
RED FLYING K MS FIRE 54G

High gaining, high performing **GROWTH AND POWER BULL** complete with extra length and stoutness of structure. Lakota 67N has done it before being of "Elite" status with an

2014 EPD's	
BW:	-1.2
WW:	+58
YW:	+96
Milk:	+23
TM:	+52

Performance	
BW:	64
Adj 205:	898
Adj 365:	1418
WPDA:	4.05
ADG:	3.43

awesome average ratio of 114 on her last 5 calves. This bull was born early which would help explain his 64 lb BW.

WI 117 YI 107

U2 Red Angus Yearling Bulls Sired by MAGNUM FORCE

B

JANUARY 28 2011

REFERENCE SIRE

RED U2 MAGNUM FORCE 177Y

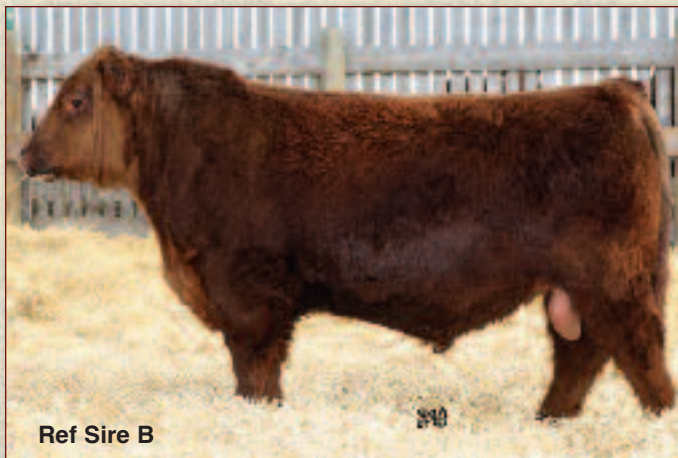
DUA 177Y #1645248 OSF

RED LAZY MC HUSTLE 18T
RED HOWE MAGNUM 169W (1498744)
RED HOWE MS MAT 216N

LAZY MC BOOM 44R
RED LAZY MC LARKABA 70R
RED TOWAW ZAMA 148F
RED HOWE MS MAT 14L

RED MLK CRK CUB 722 OSF MAF
RED FLYING K LAKOTA 14N (1157017)
RED FLYING K MS DYNAMO 91H

RED GLACIER CUB 446 OSF MAF
RED MLK CRK LAKOTA 152-HOBO OSF
RED FLYING K DYNAMO 22F
RED FLYING K VAQUERO 33F



Ref Sire B

2014 EPD's

BW: -3.0

WW: +51

YW: +90

Milk: +21

TM: +42

Performance

BW: 76

Adj 205: 794

Adj 365: 1490

Our high selling
bull in 2012 with

1/2 interest going to Weber Red Angus in South Dakota for \$28,000. We believed enough in this bull and his "Elite" dam to use him aggressively thru A.I. The results speak for themselves in this sire group – calves that are born easily and possess their sire's thickness and eye appeal with tons of hair! WI 106 YI 115



Lot #28

Lakota 14N - Dam to Ref Sire B, Red U2 Magnum Force 177Y

28

JANUARY 05 2013

MALE

RED U-2 MAGNUM FORCE 1A

DUA 1A #1764548

RED HOWE MAGNUM 169W
RED U2 MAGNUM FORCE 177Y OSF (1645248)
RED FLYING K LAKOTA 14N

RED LAZY MC HUSTLE 18T
RED HOWE MS MAT 216N
RED MLK CRK CUB 722 OSF MAF
RED FLYING K MS DYNAMO 91H

RED BAR-X PATRIOT 18H
RED BAR-X SHANIA 65P (1203057)
RED BAR-X SHANIA 6G

RED PREMIER PATRIOT 16
RED BAR-X OPHELIA 222D
RED BASIN RAINMAKER 1C
RED BAR-X PRINCESS 104E

1A is a **CALVING EASE HERD BULL** with uncommon length and dimension. This guy definitely inherited his daddy's hip and hind leg structure. Shania 65P weaned him

off at 928 lbs and on test he gained with the best of 'em. All this with a 78 lb BW and -4.1 Birth EPD!

WI 100 YI 134

2014 EPD's

BW: -4.1

WW: +37

YW: +73

Milk: +21

TM: +40

Performance

BW: 78

Adj 205: 789

Adj 365: 1440

WPDA: 3.88

ADG: 4.07

U2 Red Angus Yearling Bulls Sired by MAGNUM FORCE

Lot #29



29

JANUARY 30 2013

MALE

RED U-2 MAGNUM FORCE 299A

DUA 299A #1760159

RED HOWE MAGNUM 169W
RED U2 MAGNUM FORCE 177Y OSF (1645248)
RED FLYING K LAKOTA 14N

RED LAZY MC HUSTLE 18T
RED HOWE MS MAT 216N
RED MLK CRK CUB 722 OSF MAF
RED FLYING K MS DYNAMO 91H

RED HOWE MR MATRIX 7L AMF NHF OSF MAF
RED U-2 ANEXA 320N (1152781)
RED U-2 EMILY 126L

RED HOWE MR MAT DDH 19F
RED CRANSTON TINKERBELL 1J
RED U-2 WANTED: 917J
RED THAT'LL DO EMILY 47B

Another **FEATURE HERD BULL** with his sire's **STAMP**. He offers added body mass and substance with impressive bone and hair coat. Anexa 320N is a deep broody cow with

super udder quality. Her last bull calf was the "Limitless" bull to KBJ and Aspenview.

2014 EPD's

BW: -0.8

WW: +39

YW: +62

Milk: +16

TM: +36

Performance

BW: 86

Adj 205: 779

Adj 365: 1247

WPDA: 3.55

ADG: 3.10

Lot #30



30

JANUARY 06 2013

MALE

RED U-2 MAGNUM FORCE 4A

DUA 4A #1764547

RED HOWE MAGNUM 169W
RED U2 MAGNUM FORCE 177Y OSF (1645248)
RED FLYING K LAKOTA 14N

RED LAZY MC HUSTLE 18T
RED HOWE MS MAT 216N
RED MLK CRK CUB 722 OSF MAF
RED FLYING K MS DYNAMO 91H

RED U-2 HERCULES 8032U
RED U-2 MS ROBO 88Y (1629170)
RED U2 MS. ROBO 302W

RED FLYING K HERCULES 165P
RED STEWART PINOLA 1L
RED LIC MISSION STATEMENT P27 OSF MAF
RED FLYING K MS ROBO 73H

2014 EPD's

BW: -5.3

WW: +37

YW: +62

Milk: +18

TM: +37

Performance

BW: 63

Adj 205: 729

Adj 365: 1234

WPDA: 3.15

ADG: 3.16

4A is a **CALVING EASE BULL** that is moderate and well put together out of an absolutely beautiful first calf heifer. Sleep at night calving ease and highly maternal genetics!

U2 Red Angus Yearling Bulls Sired by MAGNUM FORCE

31

JANUARY 27 2013

MALE

RED U-2 MAGNUM FORCE 249A

DUA 249A #1760162

RED HOWE MAGNUM 169W
RED U2 MAGNUM FORCE 177Y OSF (1645248)
RED FLYING K LAKOTA 14N

RED LAZY MC HUSTLE 18T
RED HOWE MS MAT 216N
RED MLK CRK CUB 722 OSF MAF
RED FLYING K MS DYNAMO 91H

RED U-2 BIG LEAGUE 544R
RED U2 LASS 330W (1505259)
RED FLYING K LASS 178N

RED LCC MAJOR LEAGUE A502M OSF MAF
RED U-2 ANEXA 09E
RED SCHR DAKOTA CHIEF 4K
RED FLYING K MS EXECUTIVE 65J



Lot #31

2014 EPD's		Performance	
BW:	-5.1	BW:	70
WW:	+42	Adj 205:	739
YW:	+67	Adj 365:	1243
Milk:	+18	WPDA:	3.45
TM:	+39	ADG:	3.33

249A, a top representative of his sire group, is so well balanced and carries plenty of natural thickness! 330W is a nice young productive Big League daughter that raised a 3/4 brother for Crescent Hill Farms. YI 104

32

JANUARY 16 2013

MALE

RED U-2 MAGNUM FORCE 95A

DUA 95A #1760169

RED HOWE MAGNUM 169W
RED U2 MAGNUM FORCE 177Y OSF (1645248)
RED FLYING K LAKOTA 14N

RED LAZY MC HUSTLE 18T
RED HOWE MS MAT 216N
RED MLK CRK CUB 722 OSF MAF
RED FLYING K MS DYNAMO 91H

RED GEIS KNIGHT HAWK 14'02
RED U-2 MISS DREAM 478P (1208748)
RED MAC MISS DREAM 3H

RED KBJ KNIGHT 17J
RED GEIS SAMARIE 234'96
RED RD DREAMMAKER OF 3R
RED MAC MISS CREST 75W



Lot #32

2014 EPD's		Performance	
BW:	-0.8	BW:	82
WW:	+55	Adj 205:	831
YW:	+87	Adj 365:	1295
Milk:	+16	WPDA:	3.63
TM:	+44	ADG:	2.90

Yet another long and smooth fronted Magnum Force with abundant muscle shape.

We like how these 1/2 brothers carry their hind quarter low into their hind leg. 478P has been a prolific producer raising herd bulls for Midway Industries, Lakeside Colony, Kelly Donahue, Cameron Farms and Cattle Creek Ranching. WI 105

33

JANUARY 13 2013

MALE

RED U-2 MAGNUM FORCE 50A

DUA 50A #1760173

RED HOWE MAGNUM 169W
RED U2 MAGNUM FORCE 177Y OSF (1645248)
RED FLYING K LAKOTA 14N

RED LAZY MC HUSTLE 18T
RED HOWE MS MAT 216N
RED MLK CRK CUB 722 OSF MAF
RED FLYING K MS DYNAMO 91H

RED FLYING K HERCULES 165P
RED U-2 EMILY 8X (1548351)
RED U-2 EMILY 229M

RED PRICELESS 9007
RED FLYING K MS CHIEF 14G
RED BADLANDS BONUS 702
RED U-2 EMILY 933J



Lot #33

2014 EPD's		Performance	
BW:	+0.2	BW:	85
WW:	+55	Adj 205:	759
YW:	+107	Adj 365:	1477
Milk:	+19	WPDA:	3.80
TM:	+47	ADG:	4.50

High gaining high performing dark red bull complete with extra length, width and stoutness of structure. This guy just exploded on test with a 148 YI!

U2 Red Angus Yearling Bulls Sired by **MAGNUM FORCE**

Lot #34



34

JANUARY 13 2013

MALE

RED U-2 MAGNUM FORCE 57A

DUA 57A #1760171

RED HOWE MAGNUM 169W
RED U2 MAGNUM FORCE 177Y OSF (1645248)
RED FLYING K LAKOTA 14N

RED KBJ WILD CARD 896S
RED U2 OPHELIA 370W (1505279)
RED FLYING K OPHELIA 77P

RED LAZY MC HUSTLE 18T
RED HOWE MS MAT 216N
RED MLK CRK CUB 722 OSF MAF
RED FLYING K MS DYNAMO 91H

RED BCAR WILD CARD
RED DREAM MAKERS LADYBIRD 790L
RED BAR-X PATRIOT 18H
RED FLYING K MS BOOT JACK 83G

2014 EPD's		Performance	
BW:	+2.9	BW:	101
WW:	+54	Adj 205:	821
YW:	+78	Adj 365:	1275
Milk:	+19	WPDA:	3.52
TM:	+46	ADG:	2.83

Magnum Force 57A is a big strappin' rugged **POWER BULL**. His added length and performance were evident when he weaned off his mother at 915 lbs! WI 101

Lot #35



35

JANUARY 30 2013

MALE

RED U-2 MAGNUM FORCE 303A

DUA 303A #1760160

RED HOWE MAGNUM 169W
RED U2 MAGNUM FORCE 177Y OSF (1645248)
RED FLYING K LAKOTA 14N

RED U-2 BIG LEAGUE 544R
RED U-2 FEATURE 163Y (1629298)
RED U-2 FEATURE 517R

RED LAZY MC HUSTLE 18T
RED HOWE MS MAT 216N
RED MLK CRK CUB 722 OSF MAF
RED FLYING K MS DYNAMO 91H

RED LCC MAJOR LEAGUE A502M OSF MAF
RED U-2 ANEXA 09E
RED U-2 WANTED: 917J
RED U-2 FEATURE 291M

2014 EPD's		Performance	
BW:	-2.9	BW:	73
WW:	+39	Adj 205:	701
YW:	+66	Adj 365:	1299
Milk:	+17	WPDA:	3.35
TM:	+37	ADG:	3.91

Very attractive smooth fronted **CALVING EASE SPECIALIST**. Feature 163Y is a direct daughter of Feature 517R, dam of U2 Surrender, our \$29,500 high seller last year. Check out his amazing Gain Index of 113!



Feature 517R - Maternal Grandam to Lot #35

36

FEBRUARY 05 2013

MALE

RED U-2 MAGNUM FORCE 363A

DUA 363A #1760153

RED HOWE MAGNUM 169W
RED U2 MAGNUM FORCE 177Y OSF (1645248)
RED FLYING K LAKOTA 14N

RED BDL UPROAR 124U
RED U-2 GOLD EDGE 465Y (1629504)
RED U-2 GOLD EDGE 259M

RED LAZY MC HUSTLE 18T
RED HOWE MS MAT 216N
RED MLK CRK CUB 722 OSF MAF
RED FLYING K MS DYNAMO 91H

RED GOLD-BAR STONE COLD 115S
RED TOWAW DOLL 100K
RED U-2 WANTED: 917J
RED SSS GOLD EDGE 690F

2014 EPD's		Performance	
BW:	-1.0	BW:	78
WW:	+48	Adj 205:	745
YW:	+78	Adj 365:	1304
Milk:	+13	WPDA:	3.41
TM:	+37	ADG:	3.67



Touring the Weber Red Angus Herd, South Dakota

A heifer's first calf by Magnum Force that was born easily with amazing performance. He weaned strong and really took off on test with a 106 YI. Very good representative of a consistent sire group.

U2 Red Angus Yearling Bulls Sired by RECON 192Y

C

JANUARY 29 2011

REFERENCE SIRE

RED U-2 RECON 192Y

DUA 192Y #1629213

RED LJC MISSION STATEMENT P27 OSF MAF
RED U-2 MISSION 61W (1504181)
RED U-2 STORMY 205M

RED LJC LANCER 806 OSF
RED LJC HANNAH 106 OSF
RED U-2 WANTED: 917J
RED U-2 STORMY 936J

RED U-2 BIG LEAGUE 544R
RED U-2 LARKABA 8133U (1448932)
RED U-2 LARKABA 028K

RED LCC MAJOR LEAGUE A502M OSF MAF
RED U-2 ANEXA 09E
RED ANGUS ACRES JURASSIC 105E
RED TOP LARKABA 11T



2014 EPD's		Performance	
BW:	+0.4	BW:	60
WW:	+52	Adj 205:	821
YW:	+80	Adj 365:	1428
Milk:	+18	WI:	112
TM:	+43	YI:	101

Recon, a top prospect in spring '12, combines 3 of our finest cows – Anexa 48B, Anexa 09E and Larkaba 11T. He was decision deferred Sale Day so we kept him and were confident enough to turn him in with 23 females, mostly heifers. We ended up with 23 calves that are flat impressive. He's turned into a powerful Herd Sire that commands your attention and breeds true.



37

JANUARY 19 2013

MALE

RED U-2 RECON 149A

DUA 149A #1763017

RED U2 MISSION 61W
RED U-2 RECON 192Y (1629213)
RED U-2 LARKABA 8133U

RED LJC MISSION STATEMENT P27 OSF MAF
RED U-2 STORMY 205M
RED U-2 BIG LEAGUE 544R
RED U-2 LARKABA 028K

RED U2 KID ROCK 138W
RED U-2 ANEXA 271Y (1649664)
RED U-2 ANEXA 333N

RED U-2 BIG LEAGUE 544R
RED U-2 LASSIE 8F
RED BAR-E-L APPROVAL 4L
RED U-2 ANEXA 5F

TOP HERD SIRE PROSPECT resembling his sire - cherry red hair covering a wide and very shapely muscle pattern! He is deep and soft made with generous spring of rib. His dam is

an absolutely gorgeous one and only daughter of Kid Rock and our most cherished cow, Anexa 333N!

YI 136

Selling 1/2 interest;
Possession Negotiable

2014 EPD's		Performance	
BW:	-0.5	BW:	77
WW:	+47	Adj 205:	713
YW:	+88	Adj 365:	1430
Milk:	+15	WPDA:	3.56
TM:	+39	ADG:	4.49

U2 Red Angus Yearling Bulls Sired by RECON 192Y

Lot #38



38

FEBRUARY 15 2013

MALE

RED U-2 RECON 432A

DUA 432A #1763009

RED U2 MISSION 61W
RED U-2 RECON 192Y (1629213)
RED U-2 LARKABA 8133U

RED FLYING K AMBUSH 51T
RED U-2 DUCHESS 460Y (1629502)
RED U-2 DUCHESS 371N

RED LJC MISSION STATEMENT P27 OSF MAF
RED U-2 STORMY 205M
RED U-2 BIG LEAGUE 544R
RED U-2 LARKABA 028K

RED SVR AMBUSH 59P
RED FLYING K MS DYNAMO 122P
RED BAR-E-L APPROVAL 4L
RED U-2 DUCHESS 23H

Very complete wide ended bull that combines style and performance with a very user friendly birth weight.

His mother is a top straight Canadian Ambush first calf

heifer. **CUTTING
EDGE GENETICS!**

WI 118 YI 105

2014 EPD's		Performance	
BW:	+1.2	BW:	80
WW:	+55	Adj 205:	878
YW:	+76	Adj 365:	1433
Milk:	+17	WPDA:	3.99
TM:	+45	ADG:	3.63

Lot #39



39

FEBRUARY 04 2013

MALE

RED U-2 RECON 355A

DUA 355A #1763015

RED U2 MISSION 61W
RED U-2 RECON 192Y (1629213)
RED U-2 LARKABA 8133U

RED TER-RON CARLTON 810H
RED U-2 RAINBOW 6012S (1351708)
RED U-2 RAINBOW 227M

RED LJC MISSION STATEMENT P27 OSF MAF
RED U-2 STORMY 205M
RED U-2 BIG LEAGUE 544R
RED U-2 LARKABA 028K

RED SSS BOOM TOWN 260D
RED BRA HAWAMBA 10B
RED U-2 MIRAGE 12H OSF
RED BRYLOR RAINBOW 23G

This calving ease bull looks like a **COW MAKER DELUXE** with his massive rib shape, easy do-ability and structural correctness. Rainbow 6012S is a deep moderate

favorite Carlton daughter that has a son at Jim & Barb Freeman's.

WI 103

2014 EPD's		Performance	
BW:	-3.7	BW:	72
WW:	+36	Adj 205:	802
YW:	+51	Adj 365:	1243
Milk:	+18	WPDA:	3.57
TM:	+36	ADG:	2.93

U2 Red Angus Yearling Bulls Sired by RECON 192Y

40

FEBRUARY 12 2013

MALE

RED U-2 RECON 418A

DUA 418A #1763011

RED U2 MISSION 61W
RED U-2 RECON 192Y (1629213)
RED U-2 LARKABA 8133U

RED LJC MISSION STATEMENT P27 OSF MAF
RED U-2 STORMY 205M
RED U-2 BIG LEAGUE 544R
RED U-2 LARKABA 028K

RED U-2 MIRAGE 12H OSF
RED U-2 ANEXA 226M (1108226)
RED U-2 ANEXA 916J

RED TKP BODACIOUS 693 OSF
RED THAT'LL DO ANEXA 48B
RED U-2 DUKE 6G
RED U-2 ANEXA 4G



Lot #40

2014 EPD's		Performance	
BW:	-1.5	BW:	79
WW:	+38	Adj 205:	852
YW:	+37	Adj 365:	1168
Milk:	+16	WPDA:	3.34
TM:	+35	ADG:	2.15

Although light at birth, these Recon sons display a unique amount of volume and thickness early in life. 418A has done just that turning into a **VERY COMPLETE CALVING EASE BULL** that will add that all important eye appeal! Anexa 226M has been a top Mirage daughter raising bulls for Dugdale Agco, Lomond Grazing and Brian Hawk. WI 109

41

JANUARY 21 2013

MALE

RED U-2 RECON 166A

DUA 166A #1764780

RED U2 MISSION 61W
RED U-2 RECON 192Y (1629213)
RED U-2 LARKABA 8133U

RED LJC MISSION STATEMENT P27 OSF MAF
RED U-2 STORMY 205M
RED U-2 BIG LEAGUE 544R
RED U-2 LARKABA 028K

RED FLYING K AMBUSH 51T
RED U-2 DYNASTY 399Y (1629375)
RED U-2 DYNASTY 4014P

RED SVR AMBUSH 59P
RED FLYING K MS DYNAMO 122P
RED U-2 DYNASTY 320M
RED U-2 EMILY 229M



Lot #41

2014 EPD's		Performance	
BW:	+0.0	BW:	79
WW:	+43	Adj 205:	712
YW:	+67	Adj 365:	1307
Milk:	+16	WPDA:	3.36
TM:	+38	ADG:	3.89

166A is another Recon son that stays true to his sire's pattern. Born easy, weaned heavy and excelled on test! YI 113

42

JANUARY 11 2013

MALE

RED U-2 RECON 31A

DUA 31A #1763022

RED U2 MISSION 61W
RED U-2 RECON 192Y (1629213)
RED U-2 LARKABA 8133U

RED LJC MISSION STATEMENT P27 OSF MAF
RED U-2 STORMY 205M
RED U-2 BIG LEAGUE 544R
RED U-2 LARKABA 028K

RED HOWE MAGNUM 169W
RED U-2 ENVIOUS 138Y (1645236)
RED U-2 ENVIOUS 582R

RED LAZY MC HUSTLE 18T
RED HOWE MS MAT 216N
RED U-2 MVP 386N
RED U-2 ENVIOUS 216M



Lot #42

2014 EPD's		Performance	
BW:	+2.5	BW:	90
WW:	+49	Adj 205:	730
YW:	+86	Adj 365:	1365
Milk:	+13	WPDA:	3.41
TM:	+38	ADG:	3.97

31A – a moderate framed bull with clean lines and tremendous muscle. YI 120

U2 Red Angus Yearling Bulls Sired by AMBUSH 423Y



Ref Sire D

We wanted to keep this bull's genetic ability to transmit superior udder quality and muscle pattern into his progeny.

The sons look great and we can't wait to see the daughters milking!

D

MARCH 09 2011

REFERENCE SIRE

RED U-2 AMBUSH 423Y

DUA 423Y #1629550

RED SVR AMBUSH 59P
RED FLYING K AMBUSH 51T (1390707)
RED FLYING K MS DYNAMO 122P
554L

RED THAT'LL DO CALIBRE 53C
RED U-2 ANEXA 5F (866073)
RED TOWAW ANEXA 90T

RED YY RED KNIGHT 640F OSF
RED SOUTH VIEW JINNY 26C
RED FLYING K DYNAMO 67K
RED DEER RANGE BLOCKANA

RED HANDFORD TCB
RED SASKAIRIE FANCY 96W
RED TOWAW CANYON CHIEF 32P
RED TOWAW ANEXA 35R

2014 EPD's

BW:	-1.0
WW:	+38
YW:	+57
Milk:	+16
TM:	+35

Performance

BW:	78
Adj 205:	795
Adj 365:	1509
WI:	106
YI:	118

Ambush 423Y
was the last Herd
Bull raised by our
prolific Anexa 5F.

Lot #43



43

JANUARY 25 2013

MALE

RED U-2 AMBUSH 221A

DUA 221A #1763050

RED FLYING K AMBUSH 51T
RED U-2 AMBUSH 423Y (1629550)
RED U-2 ANEXA 5F

RED U-2 DYNAMO 7021T
RED U-2 POPPY 288Y (1629535)
RED FLYING K POPPY 69L

RED SVR AMBUSH 59P
RED FLYING K MS DYNAMO 122P
RED THAT'LL DO CALIBRE 53C
RED TOWAW ANEXA 90T

RED FLYING K DYNAMO 67K
RED U-2 ANEXA 549R
RED BUF CRK CHISOLM 2693
RED FLYING K MS CHIEF 71C

2014 EPD's

BW:	+1.7
WW:	+50
YW:	+81
Milk:	+18
TM:	+43

Performance

BW:	85
Adj 205:	900
Adj 365:	1576
WPDA:	4.15
ADG:	4.40

A dark red **HERD BULL** that offers added body, mass and thickness with over the top performance! All this and out of a beautiful Dynamo first calf heifer! This may be the breed changing combination of high performance / high maternal genetics!

WI 120 YI 128

Selling 1/2 Interest & Full Possession

U2 Red Angus Yearling Bulls Sired by AMBUSH 423Y



Lot #44

44

JANUARY 28 2013

MALE

RED U-2AMBUSH 272A

DUA 272A #1763046

RED FLYING K AMBUSH 51T
RED U-2 AMBUSH 423Y (1629550)
RED U-2 ANEXA 5F

RED SVR AMBUSH 59P
RED FLYING K MS DYNAMO 122P
RED THAT'LL DO CALIBRE 53C
RED TOWAW ANEXA 90T

RED U2 MISSION IMPOSSIBLE 150W
RED U-2 DYNASTY 287Y (1643033)
RED FLYING K DYNASTY 133T

RED LJC MISSION STATEMENT P27 OSF MAF
RED U-2 ANEXA 09E
RED FLYING K DYNAMO 130R
RED FLYING K PEGGY 115M

We scored this bull very high! We admire his proud demeanor with a shapely, showy muscle pattern covered with an awesome hair coat. Hang onto the females out of these 423Y sons!

WI 104

2014 EPD's		Performance	
BW:	+0.6	BW:	81
WW:	+46	Adj 205:	788
YW:	+65	Adj 365:	1295
Milk:	+16	WPDA:	3.43
TM:	+39	ADG:	3.34

45

JANUARY 07 2013

MALE

RED U-2 AMBUSH 5A

DUA 5A #1763026

RED FLYING K AMBUSH 51T
RED U-2 AMBUSH 423Y (1629550)
RED U-2 ANEXA 5F

RED SVR AMBUSH 59P
RED FLYING K MS DYNAMO 122P
RED THAT'LL DO CALIBRE 53C
RED TOWAW ANEXA 90T

RED U-2 DYNAMO 7021T
RED U-2 CHEROKEE 12X (1594307)
RED U-2 CHEROKEE 514R

RED FLYING K DYNAMO 67K
RED U-2 ANEXA 549R
RED HOWE MR MATRIX 7L AMF NHF OSF MAF
RED U-2 CHEROKEE 942J



2014 EPD's		Performance	
BW:	-4.2	BW:	65
WW:	+27	Adj 205:	774
YW:	+36	Adj 365:	1209
Milk:	+17	WPDA:	3.27
TM:	+31	ADG:	2.72

A dark red, smooth made **HEIFER BULL** with excellent performance.
WI 100

U2 Red Angus Yearling Bulls Sired by AMBUSH 423Y

Lot #46



46

JANUARY 20 2013

MALE

RED U-2 AMBUSH 156A

DUA 156A #1763053

RED FLYING K AMBUSH 51T
RED U-2 AMBUSH 423Y (1629550)
RED U-2 ANEXA 5F

RED HOWE MAGNUM 169W
RED U-2 LEXI 334Y (1645274)
RED FLYING K LEXI 55K

RED SVR AMBUSH 59P
RED FLYING K MS DYNAMO 122P
RED THAT'LL DO CALIBRE 53C
RED TOWAW ANEXA 90T

RED LAZY MC HUSTLE 18T
RED HOWE MS MAT 216N
RED TK POUNDMAKER 69Z
RED FLYING K MISS SUIJI 37W

A deep sided, easy fleshing bull with enough calving ease to use on heifers and enough depth and body mass to build a cow herd around. The maternal grandam, 55K, is still producing strong at 14 years of age.

WI 100 YI 110

2014 EPD's		Performance	
BW:	-1.4	BW:	78
WW:	+26	Adj 205:	755
YW:	+44	Adj 365:	1335
Milk:	+18	WPDA:	3.41
TM:	+31	ADG:	3.63



This bull is both long in body and performance and should pass both onto his progeny. His mother is a cherished 48B daughter that has left us many high quality replacements!
WI 100 YI 106

47

JANUARY 25 2013

MALE

RED U-2 AMBUSH 218A

DUA 218A #1763049

RED FLYING K AMBUSH 51T
RED U-2 AMBUSH 423Y (1629550)
RED U-2 ANEXA 5F

RED HOWE MR MATRIX 7L AMF NHF OSF MAF
RED U-2 ANEXA 368N (1152658)
RED THAT'LL DO ANEXA 48B

RED SVR AMBUSH 59P
RED FLYING K MS DYNAMO 122P
RED THAT'LL DO CALIBRE 53C
RED TOWAW ANEXA 90T

RED HOWE MR MAT DDH 19F
RED CRANSTON TINKERBELL 1J
RED BIEBER DSIGN 1325-082
RED TOWAW ANEXA 90T

2014 EPD's		Performance	
BW:	-1.4	BW:	84
WW:	+22	Adj 205:	796
YW:	+30	Adj 365:	1312
Milk:	+18	WPDA:	3.70
TM:	+29	ADG:	3.38

U2 Red Angus Yearling Bulls Sired by MAGNUM 169W

E

MARCH 01 2009

REFERENCE SIRE

RED HOWE MAGNUM 169W

MHZ 169W #1498744

LAZY MC BOOM 44R
RED LAZY MC HUSTLE 18T (1380931)
RED LAZY MC LARKABA 70R

RED CRCC BOOM 100N
LAZY MC CRISTY 44L
RED LAZY MC SMASH 41N OSF
RED LAZY MC LARKABA 60N

RED TOWAW ZAMA 148F
RED HOWE MS MAT 216N (1170514)
RED HOWE MS MAT 14L

RED TOWAW ZAMA 56C
RED TOWAW LAKIMA 136C
RED BJR MAKE MY DAY 981 OSF MAF
RED HOW MS MAT 8J



Ref Sire E

2014 EPD's		Performance	
BW:	-3.5	BW:	87
WW:	+47	Adj 205:	778
YW:	+90	Adj 365:	1506
Milk:	+24	WPDA:	106
TM:	+48	ADG:	143

Magnum is now our "go to" calving ease sire. He is so consistent at siring low birth weight cattle with exceptional performance both on grass and on test. Look to Magnum to also add length, muscle shape and awesome hair. Every year his sons get better and his daughters are becoming some of our most promising cows.

WI 106 YI 143



Lot #48

48

JANUARY 27 2013

MALE

RED U-2 MAGNITUDE 251A

DUA 251A #1739625

RED LAZY MC HUSTLE 18T
RED HOWE MAGNUM 169W (1498744)
RED HOWE MS MAT 216N

LAZY MC BOOM 44R
RED LAZY MC LARKABA 70R
RED TOWAW ZAMA 148F
RED HOWE MS MAT 14L

RED KBJ WILD CARD 896S
RED U-2 LARKA 10X (1548552)
RED U-2 LARKA 5041R

RED BCAR WILD CARD
RED DREAM MAKERS LADYBIRD 790L
RED U-2 WANTED: 917J
RED U-2 LARKA 184L

One of the coolest Magnum's we've produced, Magnitude is loaded with style and eye appeal and he's just as impressive from the rear! Christy was here at weaning and found him instantly! This isn't the first one his mother's produced. Her first calf last year by Big League was selected by Gary Peacock in Texas for \$19,500. WI 112 YI 112

Selling 1/2 Interest & Full Possession

2014 EPD's		Performance	
BW:	-0.1	BW:	82
WW:	+54	Adj 205:	879
YW:	+92	Adj 365:	1420
Milk:	+20	WPDA:	3.91
TM:	+47	ADG:	3.55

U2 Red Angus Yearling Bulls Sired by MAGNUM 169W



49 

JANUARY 30 2013

MALE

RED U-2 MAGNUM 294A

DUA 294A #1764563

RED LAZY MC HUSTLE 18T
RED HOWE MAGNUM 169W (1498744)
RED HOWE MS MAT 216N

LAZY MC BOOM 44R
RED LAZY MC LARKABA 70R
RED TOWAW ZAMA 148F
RED HOWE MS MAT 14L

RED SIX MILE SAKIC 832S OSF MAF
RED U-2 ANEXA 13X (1548466)
RED U-2 ANEXA 333N

RED SIX MILE AVIATOR 217P OSF
RED SIX MILE SIERA 257P OSF
RED BAR-E-L APPROVAL 4L
RED U-2 ANEXA 5F

A straight Canadian pedigreed bull that we rated very high! We like his overall balance, bold muscle shape and the fact that he carries himself like a **HERD BULL**.

A full brother was selected last year by Jordan Christenson.

2014 EPD's		Performance	
BW:	-1.5	BW:	79
WW:	+54	Adj 205:	780
YW:	+79	Adj 365:	1161
Milk:	+19	WPDA:	3.24
TM:	+46	ADG:	2.55



50 

JANUARY 30 2013

MALE

RED U-2 MAGNUM 298A

DUA 298A #1739579

RED LAZY MC HUSTLE 18T
RED HOWE MAGNUM 169W (1498744)
RED HOWE MS MAT 216N

LAZY MC BOOM 44R
RED LAZY MC LARKABA 70R
RED TOWAW ZAMA 148F
RED HOWE MS MAT 14L

RED FLYING K AMBUSH 51T
RED U-2 FAYET 212X (1548308)
RED CASTLEMAIN FAYET 721LK

RED SVR AMBUSH 59P
RED FLYING K MS DYNAMO 122P
RED LAZY S PAT 23F
RED 3-MILE BRIGHT

This fancy show-off is moderate in frame with a big bold hip. He illustrates the same low birth weight/high performance combination that these Magnum cattle have become famous for. YI 102

2014 EPD's		Performance	
BW:	-3.3	BW:	71
WW:	+40	Adj 205:	779
YW:	+64	Adj 365:	1275
Milk:	+16	WPDA:	3.49
TM:	+36	ADG:	3.28

U2 Red Angus Yearling Bulls Sired by MAGNUM 169W



Lot #51

51

JANUARY 21 2013

MALE

RED U-2 MAGNUM 163A

DUA 163A #1739641

RED LAZY MC HUSTLE 18T
RED HOWE MAGNUM 169W (1498744)
RED HOWE MS MAT 216N

LAZY MC BOOM 44R
RED LAZY MC LARKABA 70R
RED TOWAW ZAMA 148F
RED HOWE MS MAT 14L

RED U-2 HERCULES 8032U
RED U-2 INATEXXI 132X (1553560)
RED U-2 INATEXXI 139L

RED FLYING K HERCULES 165P
RED STEWART PINOLA 1L
RED BRYLOR NEW TREND 22D OSF MAF
RED U-2 INATEXXI 04D

Lot #51 is a very nicely put together Magnum son with an expressive muscle pattern and impressive coat of hair. This is a high end **CALVING EASE BULL** that weaned off his

mothers side at 830 lbs. so we recommend him for **HEIFERS OR COWS**.

YI: 102

2014 EPD's		Performance	
BW:	-2.0	BW:	78
WW:	+39	Adj 205:	789
YW:	+69	Adj 365:	1281
Milk:	+19	WPDA:	3.51
TM:	+39	ADG:	3.25

52

JANUARY 28 2013

MALE

RED U-2 MAGNUM 258A

DUA 258A #1739630

RED LAZY MC HUSTLE 18T
RED HOWE MAGNUM 169W (1498744)
RED HOWE MS MAT 216N

LAZY MC BOOM 44R
RED LAZY MC LARKABA 70R
RED TOWAW ZAMA 148F
RED HOWE MS MAT 14L

RED U-2 MVP 386N
RED U-2 MISS 79X (1548601)
RED U-2 MISS 8043U

RED HOWE MR MATRIX 7L AMF NHF OSF MAF
RED U-2 ANEXA 4G
RED FLYING K HERCULES 165P
RED U-2 1591R



Lot #52

2014 EPD's	Performance
BW: -0.9	BW: 84
WW: +45	Adj 205: 773
YW: +68	Adj 365: 1181
Milk: +19	WPDA: 3.28
TM: +42	ADG: 2.72

Another **DUAL PURPOSE** Magnum son that could be used on **HEIFERS** and then moved to the **COWHERD**. Miss 79X is a very maternal MVP daughter that has already put one replacement heifer into the herd.

U2 Red Angus Yearling Bulls Sired by MAGNUM 169W

Lot #53



53

FEBRUARY 18 2013

MALE

RED U-2 MAGNUM 447A

DUA 447A #1739459

RED LAZY MC HUSTLE 18T
RED HOWE MAGNUM 169W (1498744)
RED HOWE MS MAT 216N

LAZY MC BOOM 44R
RED LAZY MC LARKABA 70R
RED TOWAW ZAMA 148F
RED HOWE MS MAT 14L

RED SIX MILE SAKIC 832S OSF MAF
RED U-2 POPPY 109X (1548220)
RED FLYING K POPPY 63J

RED SIX MILE AVIATOR 217P OSF
RED SIX MILE SIERA 257P OSF
RED BUF CRK CHISOLM 2693
RED FLYING K MISS SUIJI 43U

Another big bodied, super fronted **HERD BULL** by Magnum that carries his thickness around flawlessly. His pedigree is geared towards maternal calving ease and top notch performance.

WI 105 YI 107

2014 EPD's		Performance	
BW:	-1.2	BW:	77
WW:	+55	Adj 205:	822
YW:	+92	Adj 365:	1342
Milk:	+21	WPDA:	3.16
TM:	+49	ADG:	3.43

Lot #54



54

FEBRUARY 07 2013

MALE

RED U-2 MAGNUM

DUA 376A #1739511

RED SVR AMBUSH 59P
RED FLYING K AMBUSH 51T (1390707)
RED FLYING K MS DYNAMO 122P

RED YY RED KNIGHT 640F OSF
RED SOUTH VIEW JINNY 26C
RED FLYING K DYNAMO 67K
RED DEER RANGE BLOCKANA 554L

RED U-2 DYNAMO 7021T
RED U-2 BEAUTY 105X (1548487)
RED FLYING K BEAUTY 39P

RED FLYING K DYNAMO 67K
RED U-2 ANEXA 549R
RED PATRIOT 629 OSF
RED FLYING K MISS CV 66M

This Magnum son is solid and complete with highly maternal genetics on both sides of his pedigree. Born at 76 lbs and weaned off his mother at 882 lbs, this sale feature is impressive! WI 113

2014 EPD's		Performance	
BW:	-1.6	BW:	76
WW:	+48	Adj 205:	882
YW:	+80	Adj 365:	1329
Milk:	+22	WPDA:	3.63
TM:	+46	ADG:	3.44

U2 Red Angus Yearling Bulls Sired by MAGNUM 169W



Lot #55

55

JANUARY 23 2013

MALE

RED U-2 MAGNUM 190A

DUA 190A #1739655

RED LAZY MC HUSTLE 18T
RED HOWE MAGNUM 169W (1498744)
RED HOWE MS MAT 216N

LAZY MC BOOM 44R
RED LAZY MC LARKABA 70R
RED TOWAW ZAMA 148F
RED HOWE MS MAT 14L

RED U-2 HERCULES 8032U
RED U-2 ANEXA 216X (1553567)
RED U-2 ANEXA 8286U

RED FLYING K HERCULES 165P
RED STEWART PINOLA 1L
RED U-2 INXS 1665S
RED U-2 ANEXA 6053S

It is easy to admire this bull's eye appeal, strong top and overall balance all covered in Magnum's signature hair coat!

We would use him on **HEIFERS OR COWS** with confidence.

YI 110

2014 EPD's		Performance	
BW:	-3.0	BW:	76
WW:	+36	Adj 205:	716
YW:	+70	Adj 365:	1248
Milk:	+20	WPDA:	3.36
TM:	+38	ADG:	3.50



Lot #56

56

FEBRUARY 07 2013

MALE

RED U-2 MAGNUM 378A

DUA 378A #1739513

RED LAZY MC HUSTLE 18T
RED HOWE MAGNUM 169W (1498744)
RED HOWE MS MAT 216N

LAZY MC BOOM 44R
RED LAZY MC LARKABA 70R
RED TOWAW ZAMA 148F
RED HOWE MS MAT 14L

RED U-2 DYNAMO 7021T
RED D-BAR STARLET 50X (1580950)
RED D-BAR STARLET 56U

RED FLYING K DYNAMO 67K
RED U-2 ANEXA 549R
RED D-BAR NT DESIGN 32N
RED FULLERTONS STARLET 14H

Another Magnum very similar to his half brothers before him – plenty of top and shape with **BUILT IN CALVING EASE**. This bull catches your eye with his style and presence.

1/2 brother sold last year to Lomond Colony.

WI 102 YI 117

2014 EPD's		Performance	
BW:	-2.4	BW:	77
WW:	+49	Adj 205:	804
YW:	+92	Adj 365:	1369
Milk:	+20	WPDA:	3.73
TM:	+45	ADG:	3.70

U2 Red Angus Yearling Bulls Sired by MAGNUM 169W

Lot #57



57

FEBRUARY 02 2013

MALE

RED U-2 MAGNUM 338A

DUA 338A #1739543

RED LAZY MC HUSTLE 18T
RED HOWE MAGNUM 169W (1498744)
RED HOWE MS MAT 216N

LAZY MC BOOM 44R
RED LAZY MC LARKABA 70R
RED TOWAW ZAMA 148F
RED HOWE MS MAT 14L

RED U-2 INXS 1665S
RED U-2 MISTY 160X (1548524)
RED U-2 MAXIM 495P

RED U-2 ILLICIT 423P OSF MAF
RED U-2 ANEXA 36G
RED HOWE MR MATRIX 7L AMF NHF OSF MAF
RED U-2 MISTY 133L

Big bodied, wide made bull with **BUILT IN CALVING EASE**. Look at his performance numbers! It's difficult to find bulls with a 78 lb BW that read and index like this!

WI 104 YI 123

2014 EPD's

BW: -2.2

WW: +41

YW: +81

Milk: +18

TM: +39

Performance

BW: 78

Adj 205: 817

Adj 365: 1415

WPDA: 3.84

ADG: 3.91

Lot #58



58

JANUARY 30 2013

MALE

RED U-2 MAGNUM 293A

DUA 293A #1739576

RED LAZY MC HUSTLE 18T
RED HOWE MAGNUM 169W (1498744)
RED HOWE MS MAT 216N

LAZY MC BOOM 44R
RED LAZY MC LARKABA 70R
RED TOWAW ZAMA 148F
RED HOWE MS MAT 14L

RED U-2 WILD THING 8235U
RED U-2 RUBY 363X (1553538)
RED U-2 RUBY 275M

RED KBJ WILD CARD 896S
RED U-2 ANEXA 333N
RED GOLD-BAR KING V415 107K
RED NORTHLINE RUBY 205F

This bull reminds us a lot of the Magnum 168Z bull that sold last year to Don Brooks from Texas and Silver Spur from Nebraska. They are very similar in type both being very thick

bodied bulls with that cow maker look to them.

Take a long look at this guy!

WI 102

2014 EPD's

BW: -0.8

WW: +51

YW: +84

Milk: +17

TM: +43

Performance

BW: 80

Adj 205: 803

Adj 365: 1258

WPDA: 3.48

ADG: 3.02

U2 Red Angus Yearling Bulls Sired by MAGNUM 169W

59

JANUARY 17 2013

MALE

RED U-2 MAGNUM 112A

DUA 112A #1760168

RED HOWE MAGNUM 169W
RED U2 MAGNUM FORCE 177Y OSF (1645248)
RED FLYING K LAKOTA 14N

RED LAZY MC HUSTLE 18T
RED HOWE MS MAT 216N
RED MLK CRK CUB 722 OSF MAF
RED FLYING K MS DYNAMO 91H

RED FLYING K AMBUSH 51T
RED U-2 MABEL 265X (1548463)
RED U-2 MABEL 316N

RED SVR AMBUSH 59P
RED FLYING K MS DYNAMO 122P
RED HOWE MR MATRIX 7L AMF NHF OSF MAF
RED U-2 MABEL 103L



Weber Red Angus (South Dakota)
Home of 2012 & 2013 High Selling Bulls

2014 EPD's		Performance	
BW:	-5.3	BW:	60
WW:	+33	Adj 205:	705
YW:	+54	Adj 365:	1228
Milk:	+15	WPDA:	3.25
TM:	+32	ADG:	3.28

A "SLEEP AT NIGHT" HEIFER BULL with plenty of eye appeal and performance.
YI 108

60

JANUARY 17 2013

MALE

RED U-2 MAGNUM 107A

DUA 107A #1760167

RED HOWE MAGNUM 169W
RED U2 MAGNUM FORCE 177Y OSF (1645248)
RED FLYING K LAKOTA 14N

RED LAZY MC HUSTLE 18T
RED HOWE MS MAT 216N
RED MLK CRK CUB 722 OSF MAF
RED FLYING K MS DYNAMO 91H

RED FLYING K AMBUSH 51T
RED U-2 MS DYNAMO 204X (1548457)
RED FLYING K MS DYNAMO 101N

RED SVR AMBUSH 59P
RED FLYING K MS DYNAMO 122P
RED FLYING K DYNAMO 67K
RED SBRA DARLA 30D



2014 EPD's		Performance	
BW:	-3.6	BW:	72
WW:	+37	Adj 205:	808
YW:	+40	Adj 365:	1129
Milk:	+17	WPDA:	3.26
TM:	+36	ADG:	2.01

107A is a sharp fronted smooth made **HEIFER BULL** with enough thickness and performance to not be outdone! His dam, 204X, is a beautifully uddered young Ambush female that has raised a bull last year for Luke Ball. WI 103

61

JANUARY 20 2013

MALE

RED U-2 MAGNUM 158A

DUA 158A #1739640

RED LAZY MC HUSTLE 18T
RED HOWE MAGNUM 169W (1498744)
RED HOWE MS MAT 216N

LAZY MC BOOM 44R
RED LAZY MC LARKABA 70R
RED TOWAW ZAMA 148F
RED HOWE MS MAT 14L

RED FLYING K AMBUSH 6T
RED U-2 MS DYNAMO 38X (1548587)
RED FLYING K MS DYNAMO 4U

RED SVR AMBUSH 59P
RED FLYING K MANDY 120N
RED U-2 ALL STAR 1513R
RED FLYING K MS DYNAMO 58N



2014 EPD's		Performance	
BW:	-2.5	BW:	82
WW:	+39	Adj 205:	786
YW:	+66	Adj 365:	1328
Milk:	+17	WPDA:	3.57
TM:	+37	ADG:	3.48

Dark red, smooth fronted **CALVING EASE BULL** with enough depth and performance to breed **HEIFERS AND COWS**.
YI 112

U2 Red Angus Yearling Bulls Sired by **STRIKE FORCE**



F

JANUARY 11 2011

REFERENCE SIRE

RED U-2 STRIKE FORCE 24Y

DUA 24Y #1629190

RED LJC MISSION STATEMENT P27 OSF MAF
RED U2 MISSION 61W (1504181)
 RED U-2 STORMY 205M

RED LJC LANCER 806 OSF
 RED LJC HANNAH 106 OSF
 RED U-2 WANTED: 917J
 RED U-2 STORMY 936J

RED U-2 BIG LEAGUE 544R
RED U-2 LASSIE 8012U (1448827)
 RED U-2 LASSIE 1618S

RED LCC MAJOR LEAGUE A502M OSF MAF
 RED U-2 ANEXA 09E
 RED TER-RON CARLTON 810H
 RED U-2 LASSIE 379N

Strike Force 24Y
 was a high seller in
 2012 to Robb
 Farms & Y Coulee.

2014 EPD's	
BW:	-1.3
WW:	+55
YW:	+84
Milk:	+13
TM:	+41

Performance

BW:	78
Adj 205:	722
Adj 365:	1331

We kept a 1/2 interest and used him thru A.I. with excellent results. His progeny show his muscle expression from a very young age and don't slow down. The 24Y heifer calves are at the top of our replacement pen. We are excited about this sire group in the offering. Most are the top end calving ease bulls with enough performance to be used in the cowherd.



62

JANUARY 14 2013

MALE

RED U-2 STRIKE FORCE 63A

DUA 63A #1772992

RED U2 MISSION 61W
RED U-2 STRIKE FORCE 24Y (1629190)
 RED U-2 LASSIE 8012U

RED LJC MISSION STATEMENT P27 OSF MAF
 RED U-2 STORMY 205M
 RED U-2 BIG LEAGUE 544R
 RED U-2 LASSIE 1618S

RED TER-RON ZORRO 340N
RED U-2 LADY 1595R (1292647)
 RED U-2 LADY 1330N

RED HEARTLAND KNIGHT CHARM 11L
 RED TER-RON GOLDIE 240L
 RED U-2 WANTED: 917J
 RED U-2 LADY 088K

This soft made prospect is made nice from his calving ease head thru his neck and shoulders. He carries the same round muscle pattern as his sire with plenty of eye appeal and length.

1595R has given us only one other bull calf that sold to K5 River Ranch in SK.

YI 109

2014 EPD's	
BW:	-1.5
WW:	+42
YW:	+69
Milk:	+14
TM:	+35

Performance	
BW:	83
Adj 205:	732
Adj 365:	1258
WPDA:	3.44
ADG:	3.29

U2 Red Angus Yearling Bulls Sired by **STRIKE FORCE**



Lot #63

63

JANUARY 06 2013

MALE TW

RED U-2 STRIKE FORCE 2A

DUA 2A #1772984

RED U2 MISSION 61W
RED U-2 STRIKE FORCE 24Y (1629190)
RED U-2 LASSIE 8012U

RED LJC MISSION STATEMENT P27 OSF MAF
RED U-2 STORMY 205M
RED U-2 BIG LEAGUE 544R
RED U-2 LASSIE 1618S

RED FLYING K AMBUSH 6T
RED U-2 ANEXA 67X (1548602)
RED U-2 ANEXA 8053U

RED SVR AMBUSH 59P
RED FLYING K MANDY 120N
RED LAZY MC SMASH 41N OSF
RED U-2 ANEXA 1656S

This sale feature is a twin. He is a dark red very complete calf that would **WORK WELL ON HEIFERS AND COWS**.

His mama is a rare prized Ambush 6T daughter that already has a heifer in our replacement pen!

2014 EPD's		Performance	
BW:	-1.2	BW:	67
WW:	+51	Adj 205:	812
YW:	+74	Adj 365:	1319
Milk:	+14	WPDA:	3.54
TM:	+40	ADG:	3.20

64

FEBRUARY 04 2013

MALE

RED U-2 STRIKE FORCE 352A

DUA 352A #1773001

RED U2 MISSION 61W
RED U-2 STRIKE FORCE 24Y (1629190)
RED U-2 LASSIE 8012U

RED LJC MISSION STATEMENT P27 OSF MAF
RED U-2 STORMY 205M
RED U-2 BIG LEAGUE 544R
RED U-2 LASSIE 1618S

RED U-2 WANTED: 917J
RED U-2 HI DEE HO 1459P (1208780)
RED SRN HI DEE HO 078

RED TKP BODACIOUS 693 OSF
RED THAT'LL DO ANEXA 48B
RED HOLDEN HI HO 7151 OSF MAF
RED FARN RED KID 758



Lot #64

2014 EPD's		Performance	
BW:	+2.1	BW:	92
WW:	+48	Adj 205:	763
YW:	+83	Adj 365:	1346
Milk:	+13	WPDA:	3.76
TM:	+37	ADG:	3.82

Dark red **POWER BULL** out of an awesome Wanted daughter that has raised top selling bulls to Tyler Pasiciel and Gary & Matthew Beckman.

YI 120

U2 Red Angus Yearling Bulls Sired by **STRIKE FORCE**



65

FEBRUARY 01 2013

MALE

RED U-2 STRIKE FORCE 332A

DUA 332A #1773004

RED U2 MISSION 61W
RED U-2 STRIKE FORCE 24Y (1629190)
RED U-2 LASSIE 8012U

RED HOWE MAGNUM 169W
RED U-2 CHEROKEE 147Y (1645235)
RED U-2 CHEROKEE 507R

RED LJC MISSION STATEMENT P27 OSF MAF
RED U-2 STORMY 205M
RED U-2 BIG LEAGUE 544R
RED U-2 LASSIE 1618S

RED LAZY MC HUSTLE 18T
RED HOWE MS MAT 216N
RED HOWE MR MATRIX 7L AMF NHF OSF MAF
RED U-2 CHEROKEE 152L

This easy doin' chunk weaned heavy and exploded on test with a 119 YI! He packs so much shape and depth into his moderate frame yet started out at only 72 lbs. His mother,

a first calf heifer is one of our favorites and his maternal grandma is an "Elite" cow with a top production record.

**CALVING EASE WITH
HERD BUILDING
GENETICS!**

2014 EPD's	
BW:	-3.6
WW:	+34
YW:	+61
Milk:	+16
TM:	+33

Performance	
BW:	72
Adj 205:	769
Adj 365:	1359
WPDA:	3.56
ADG:	3.86



66

JANUARY 28 2013

MALE

RED U-2 STRIKE FORCE 271A

DUA 271A #1772999

RED U2 MISSION 61W
RED U-2 STRIKE FORCE 24Y (1629190)
RED U-2 LASSIE 8012U

RED PATRIOT 629 OSF
RED FLYING K BEAUTY 19P (1208884)
RED CASTLEMAIN EMILY 735LK

RED LJC MISSION STATEMENT P27 OSF MAF
RED U-2 STORMY 205M
RED U-2 BIG LEAGUE 544R
RED U-2 LASSIE 1618S

RED FLYING K PAT 43C OSF
RED BEAUTY
RED LAZY S PAT 23F
RED V E E EMILY 35B

271A is an especially long sided, stout muscled individual with the paperwork to back his performance. A great candidate for those who feed their calves out as he indexed WI 102

and YI 118.

We've waited 8 years for Beauty 19P to give us her first bull calf!

2014 EPD's	
BW:	+0.7
WW:	+53
YW:	+88
Milk:	+12
TM:	+39

Performance	
BW:	90
Adj 205:	815
Adj 365:	1386
WPDA:	3.89
ADG:	3.74

U2 Red Angus Yearling Bulls Sired by **STRIKE FORCE**

67

JANUARY 18 2013

MALE

RED U-2 STRIKE FORCE 133A

DUA 133A #1772994

RED U2 MISSION 61W
RED U-2 STRIKE FORCE 24Y (1629190)
RED U-2 LASSIE 8012U

RED LJC MISSION STATEMENT P27 OSF MAF
RED U-2 STORMY 205M
RED U-2 BIG LEAGUE 544R
RED U-2 LASSIE 1618S

RED KBJ WILD CARD 896S
RED U-2 RAINBOW 46X (1548613)
RED U-2 RAQINBOW 8136U

RED BCAR WILD CARD
RED DREAM MAKERS LADYBIRD 790L
RED U-2 BIG LEAGUE 544R
RED U-2 RAINBOW 6012S



Lot #67

2014 EPD's		Performance	
BW:	-0.2	BW:	81
WW:	+53	Adj 205:	800
YW:	+84	Adj 365:	1346
Milk:	+18	WPDA:	3.62
TM:	+45	ADG:	3.50

Another super fronted Strike Force calf with that big top and lower quarter on him! We love the birth to yearling ratio of bulls like this. **RECOMMENDED FOR HEIFERS & COWS.** WI 100 YI 100

68

JANUARY 16 2013

MALE

RED U-2 STRIKE FORCE 92A

DUA 92A #1772986

RED U2 MISSION 61W
RED U-2 STRIKE FORCE 24Y (1629190)
RED U-2 LASSIE 8012U

RED LJC MISSION STATEMENT P27 OSF MAF
RED U-2 STORMY 205M
RED U-2 BIG LEAGUE 544R
RED U-2 LASSIE 1618S

RED U-2 DYNASTY 320M
RED U-2 DYNASTY 4014P (1208913)
RED U-2 EMILY 229M

ACN DMM DYNASTY 15J
RED ENVIOUS 19U OF EAST FORK
RED BADLANDS BONUS 702
RED U-2 EMILY 933J



Lot #68

2014 EPD's		Performance	
BW:	-1.8	BW:	82
WW:	+47	Adj 205:	782
YW:	+68	Adj 365:	1223
Milk:	+16	WPDA:	3.43
TM:	+40	ADG:	2.76

Same sire... same pattern.... same performance – we can't get over the consistency in this group! His dam, Dynasty 4014P, has given us her share of very high quality replacement females! Once again, this guy could be **USED ON HEIFERS & COWS.**

69

JANUARY 12 2013

MALE

RED U-2 STRIKE FORCE 33A

DUA 33A #1772980

RED U2 MISSION 61W
RED U-2 STRIKE FORCE 24Y (1629190)
RED U-2 LASSIE 8012U

RED LJC MISSION STATEMENT P27 OSF MAF
RED U-2 STORMY 205M
RED U-2 BIG LEAGUE 544R
RED U-2 LASSIE 1618S

RED U-2 HERCULES 8032U
RED U-2 MANDY 10Y (1629160)
RED U2 MANDY 447W

RED FLYING K HERCULES 165P
RED STEWART PINOLA 1L
RED KBJ WILD CARD 896S
RED FLYING K MANDY 120N



2014 EPD's		Performance	
BW:	+0.3	BW:	82
WW:	+46	Adj 205:	860
YW:	+63	Adj 365:	1325
Milk:	+15	WPDA:	3.49
TM:	+38	ADG:	2.91

This long bodied, shapely bull possesses the ideal balance of modest birth weight and heavy weaning and yearling weight. Look at the **PERFORMANCE** from a first calf heifer! WI 115

U2 Red Angus Yearling Bulls Sired by MAMA'S BOY 167X



G

JANUARY 19 2010
REFERENCE SIRE

RED U-2 MAMA'S BOY 167X

DUA 167X #1596371

RED SVR AMBUSH 59P
RED FLYING K AMBUSH 6T (1390691)
RED FLYING K MANDY 120N

RED U-2 BIG LEAGUE 544R
RED FLYING K LAKOTA 104U (1448765)
RED FLYING K LAKOTA 68N

RED YY RED KNIGHT 640F OSF
RED SOUTH VIEW JINNY 26C
RED REVERE 1786
RED FLYING K MS LOGAN 11H

RED LCC MAJOR LEAGUE A502M MAF OSF
RED U-2 ANEXA 09E
RED MLK CRK CUB 722 OSF
RED FLYING K MS. SENSATIONAL

Our high seller in
2011 to Y-Coulee.
His bull calves
stand out display-

2014 EPD's	
BW:	-0.2
WW:	+35
YW:	+44
Milk:	+19
TM:	+36

Performance	
BW:	73
Adj 205:	891
Adj 365:	1314
WPDA:	3.49
ADG:	2.82

ing his dark red color and exceptional round muscle pattern. Last year a son named "Justified" was one of our high sellers to Bar-E-L. His females have also proven themselves being standouts at Red Round -Up and a class winner / sale topper in Denver! We are proud to have raised this bull and to have Houghams as our partners on him!

Lot #70



70

JANUARY 08 2013
MALE

RED U-2 MAMA'S BOY 9A

DUA 9A #1760108

RED FLYING K AMBUSH 6T
RED U-2 MAMA'S BOY 167X (1596371)
RED FLYING K LAKOTA 104U

RED U2 MISSION 61W
RED U-2 INATEXXI 57Y (1629508)
RED U-2 INATEXXI 908J

RED SVR AMBUSH 59P
RED FLYING K MANDY 120N
RED U-2 BIG LEAGUE 544R
RED FLYING K LAKOTA 68N

RED LJC MISSION STATEMENT P27 OSF MAF
RED U-2 STORMY 205M
RED BJR MAKE MY DAY 981 OSF MAF
RED U-2 INATEXXI 13F

A **CALVING EASE HERD BULL** that has been extra ordinary since he was a month old. Smooth fronted with uncommon length and added dimension and out of a top

Mission 61W daughter
make this bull special!
YI 100

2014 EPD's	
BW:	-0.6
WW:	+40
YW:	+60
Milk:	+13
TM:	+33

Performance	
BW:	81
Adj 205:	759
Adj 365:	1289
WPDA:	3.29
ADG:	3.32

U2 Red Angus Yearling Bulls Sired by MAMA'S BOY 167X



71

JANUARY 17 2013

MALE

RED U-2 MAMA'S BOY 116A

DUA 116A #1760114

RED FLYING K AMBUSH 6T
RED U-2 MAMA'S BOY 167X (1596371)
RED FLYING K LAKOTA 104U

RED SVR AMBUSH 59P
RED FLYING K MANDY 120N
RED U-2 BIG LEAGUE 544R
RED FLYING K LAKOTA 68N

RED U2 MISSION IMPOSSIBLE 150W
RED U-2 LARKABA 171Y (1643025)
RED U-2 LARKA 691S

RED LJC MISSION STATEMENT P27 OSF MAF
RED U-2 ANEXA 09E
RED TER-RON CARLTON 810H
RED U-2 LARKA 222M

116A almost a split image of his sire, maybe even stouter – same cool look and round muscle pattern with a wicked hair coat on a moderate frame. His mama is a daughter of our 691S cow that has raised herd bulls for Earl Ranches and Verle Paul.

YI 120

2014 EPD's		Performance	
BW:	+2.1	BW:	87
WW:	+46	Adj 205:	704
YW:	+70	Adj 365:	1337
Milk:	+15	WPDA:	3.35
TM:	+38	ADG:	3.96

72

JANUARY 17 2013

MALE

RED U-2 MAMA'S BOY 110A

DUA 110A #1760115

RED FLYING K AMBUSH 6T
RED U-2 MAMA'S BOY 167X (1596371)
RED FLYING K LAKOTA 104U

RED SVR AMBUSH 59P
RED FLYING K MANDY 120N
RED U-2 BIG LEAGUE 544R
RED FLYING K LAKOTA 68N

RED U2 MISSION 61W
RED U-2 EMILY 248Y (1629445)
RED U-2 EMILY 232M

RED LJC MISSION STATEMENT P27 OSF MAF
RED U-2 STORMY 205M
RED FLY AWAY RAMBO 143K
RED U-2 EMILY 932J



2014 EPD's		Performance	
BW:	+0.9	BW:	82
WW:	+44	Adj 205:	749
YW:	+81	Adj 365:	1453
Milk:	+10	WPDA:	3.64
TM:	+32	ADG:	4.40

A definite favorite with visitors in this sire group! He looked good at weaning but really turned it up a notch on test. We admire his sound structure, proud character and clean lines. His dam is a gorgeous Mission first calf heifer. YI 133

U2 Red Angus Yearling Bulls Sired by MAMA'S BOY 167X



Lot #73

73 

FEBRUARY 01 2013

MALE

RED U-2 MAMA'S BOY 331A

DUA 331A #1760125

RED FLYING K AMBUSH 6T
RED U-2 MAMA'S BOY 167X (1596371)
RED FLYING K LAKOTA 104U

RED HOWE MAGNUM 169W
RED U-2 LADY 361Y (1645241)
RED U-2 LADY 1595R

RED SVR AMBUSH 59P
RED FLYING K MANDY 120N
RED U-2 BIG LEAGUE 544R
RED FLYING K LAKOTA 68N

RED LAZY MC HUSTLE 18T
RED HOWE MS MAT 216N
RED TER-RON ZORRO 340N
RED U-2 LADY 1330N

Another calf that displays the stamp Mama's Boy puts onto his sons! Cattle with this kind of shape and hair will always be in demand. Lady 361Y is a deep broody heifer with

a quality udder, typical of the Magnum females.

YI 124

2014 EPD's		Performance	
BW:	+0.3	BW:	82
WW:	+43	Adj 205:	745
YW:	+75	Adj 365:	1398
Milk:	+16	WPDA:	3.62
TM:	+38	ADG:	4.26



Lot #74

74 

JANUARY 19 2013

MALE

RED U-2 MAMA'S BOY 148A

DUA 148A #1760111

RED FLYING K AMBUSH 6T
RED U-2 MAMA'S BOY 167X (1596371)
RED FLYING K LAKOTA 104U

RED BDL UPROAR 124U
RED U-2 MS DYNAMO 332Y (1629236)
RED FLYING K MS DYNAMO 73U

RED SVR AMBUSH 59P
RED FLYING K MANDY 120N
RED U-2 BIG LEAGUE 544R
RED FLYING K LAKOTA 68N

RED GOLD-BAR STONE COLD 115S
RED TOWAW DOLL 100K
RED U-2 IDOL 1654S
RED FLYING K MS DYNAMO 72P

As his picture shows, 148A is another Mama's Boy with a BIG business end on him! If you're serious about adding more meat & muscle, don't look past this bull. This kind of unique thickness with this kind of consistency is hard to find! YI 103

2014 EPD's		Performance	
BW:	-1.1	BW:	81
WW:	+33	Adj 205:	677
YW:	+48	Adj 365:	1222
Milk:	+14	WPDA:	3.08
TM:	+30	ADG:	3.41